

RNAV (GPS) RWY 18

SBAS Chan 57304 W18A	APCH CRS 179°	Rwy Idg 9600 TDZE 35 Arprt Elev 38
--	-------------------------	---

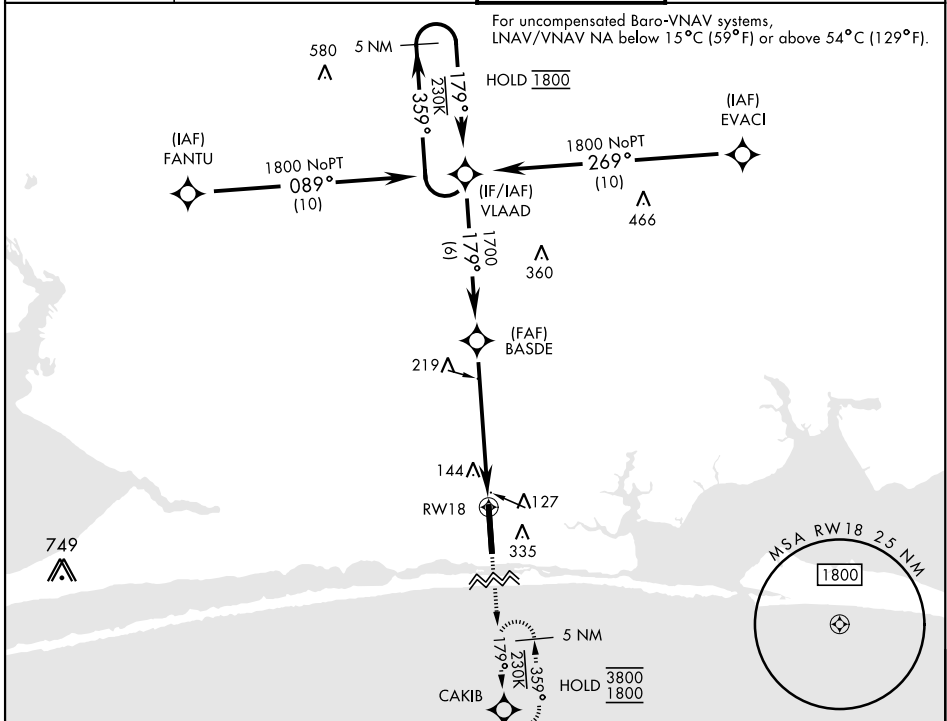
[USAF]

HURLBURT FLD (KHRT)

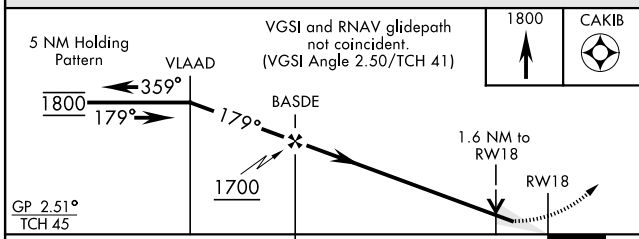
RNP APCH. DME/DME RNP - 0.3 NA	SALSF
--------------------------------	-----------

MISSED APPROACH: Climb to 1800 direct CAKIB and hold.

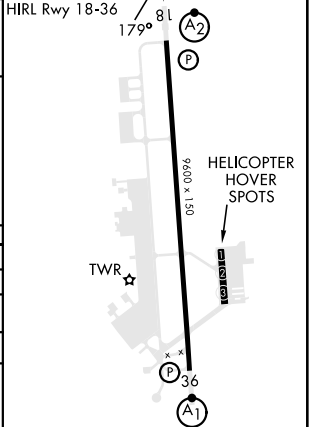
ATIS 134.475 360.675	EGLIN APP CON 125.1 281.45 (271°- 089°) 132.1 360.6 (090°- 270°)	TOWER 126.5 351.675	GND CON 123.975 275.8
--------------------------------	--	-------------------------------	---------------------------------



EMERG SAFE ALT 100 NM 3700



ELEV 38	TDZE 35
---------	---------



CATEGORY	A	B	C	D	E
LPV DA	285- $\frac{3}{4}$		250	(300- $\frac{3}{4}$)	
LNAV/VNAV DA*	427- $\frac{7}{8}$		392	(400- $\frac{7}{8}$)	
LNAV MDA**	500- $\frac{3}{4}$	465 (500- $\frac{3}{4}$)	500-1 $\frac{1}{8}$	465	(500-1 $\frac{1}{8}$)
CIRCLING	640-1	602 (700-1)	640-1 $\frac{3}{4}$ 602 (700-1 $\frac{3}{4}$)	840-2 $\frac{1}{2}$ 802 (900-2 $\frac{1}{2}$)	840-2 $\frac{3}{4}$ 802 (900-2 $\frac{3}{4}$)

RNAV (GPS) RWY 18

SE-3, 13 JUN 2024 to 11 JUL 2024

SE-3, 13 JUN 2024 to 11 JUL 2024