

LOC I-PWA <b>110.15</b>	APP CRS <b>175°</b>	Rwy Idg <b>6844</b>
		TDZE <b>1291</b>
		Apt Elev <b>1300</b>

# ILS or LOC RWY 17L

WILEY POST (PWA)

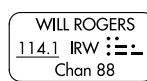
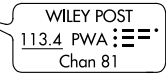
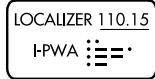
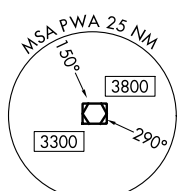
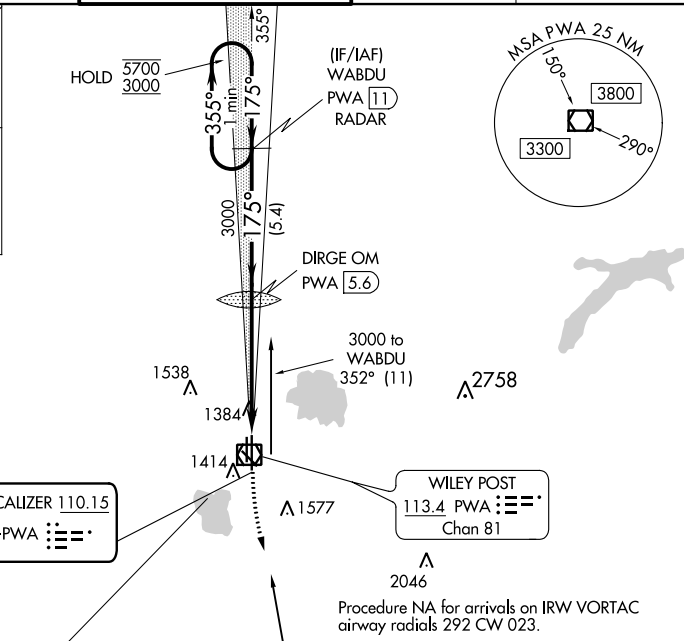
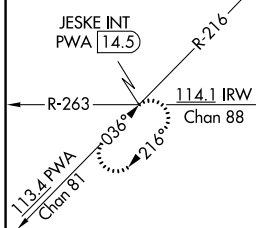
DME or RADAR required.



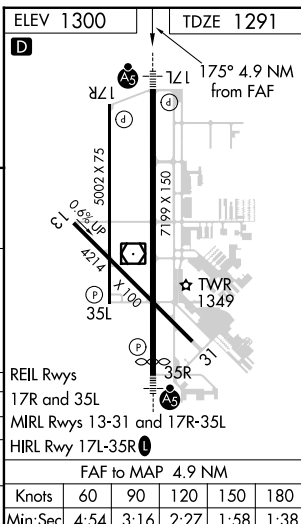
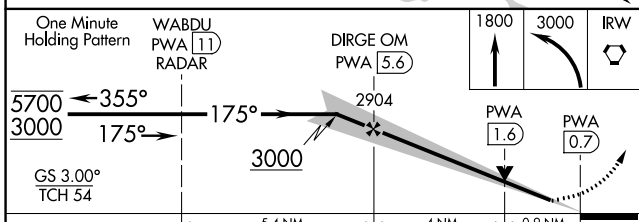
**MISSED APPROACH:** Climb to 1800 then climbing left turn to 3000 direct IRW VORTAC and hold.

ATIS <b>128.725</b>	OKC CITY APP CON <b>124.6 266.8</b>	<b>WILEY POST TOWER *</b> 126.9 (CTAF) <b>0 306.9</b>	GND CON <b>121.7</b>	UNICOM <b>122.95</b>
------------------------	--	--	-------------------------	-------------------------

ALTERNATE MISSED APCH FIX



Procedure NA for arrivals on IRW VORTAC airway radials 292 CW 023.



CATEGORY	A	B	C	D
S-ILS 17L		1491-1/2	200 (200-1/2)	
S-LOC 17L	1640-1/2	349 (400-1/2)	1640-5/8	349 (400-5/8)
CIRCLING	1780-1	480 (500-1)	1880-1/2 580 (600-1/2)	1880-2 580 (600-2)

FAF to MAP 4.9 NM	
Knots	60 90 120 150 180
Min:Sec	4:54 3:16 2:27 1:58 1:38

SC-1, 13 JUN 2024 to 11 JUL 2024

SC-1, 13 JUN 2024 to 11 JUL 2024