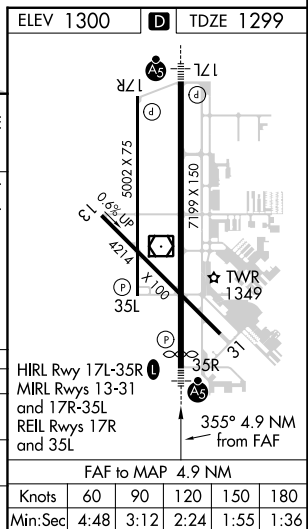
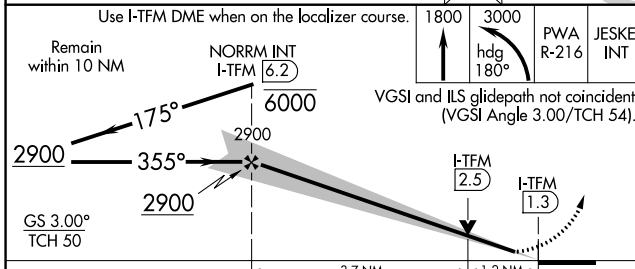
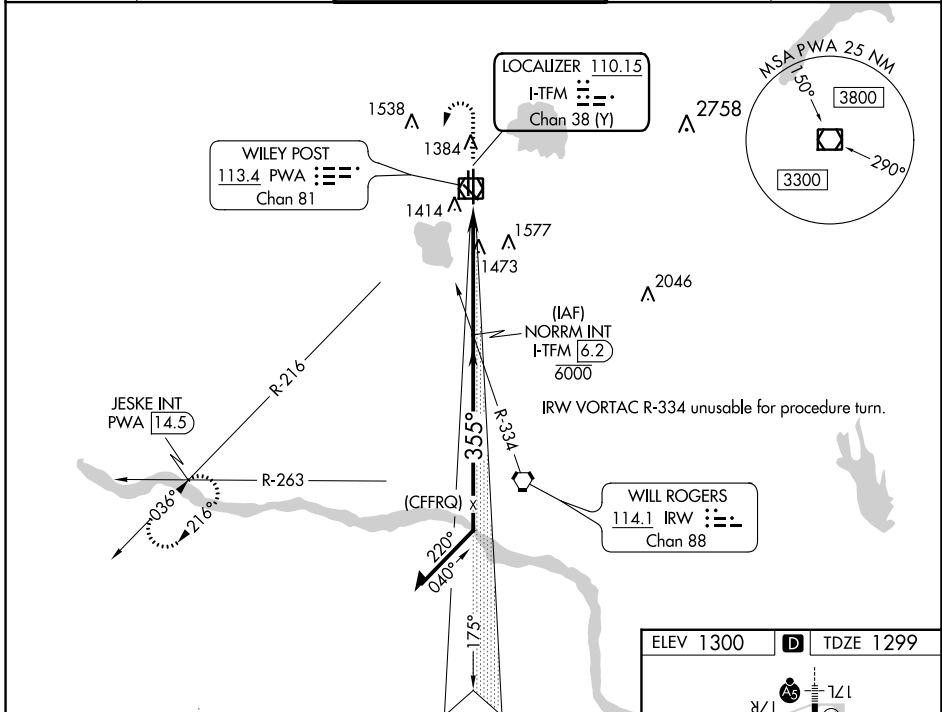


LOC/DME I-TFM <b>110.15</b> Chan <b>38</b> (Y)	APP CRS <b>355°</b>	Rwy Idg <b>6844</b> TDZE <b>1299</b> Apt Elev <b>1300</b>
--	------------------------	---

# ILS or LOC RWY 35R

WILEY POST (PWA)

DME and RADAR required.		MALSR	MISSED APPROACH: Climb to 1800 then climbing left turn to 3000 on heading 180° and PWA VOR/DME R-216 to JESKE INT/PWA 14.5 DME and hold.	
ATIS <b>128.725</b>	OKE CITY APP CON <b>124.6 266.8</b>	WILEY POST TOWER ★ <b>126.9</b> (CTAF) <b>306.9</b>	GND CON <b>121.7</b>	UNICOM <b>122.95</b>



CATEGORY	A	B	C	D
S-ILS 35R		1499-1/2	200 (200-1/2)	
S-LOC 35R	1740-1/2	441 (500-1/2)	1740-7/8	441 (500-7/8)
CIRCLING	1780-1	480 (500-1)	1880-1 1/2 580 (600-1 1/2)	1880-2 580 (600-2)

SC-1, 13 JUN 2024 to 11 JUL 2024

SC-1, 13 JUN 2024 to 11 JUL 2024