

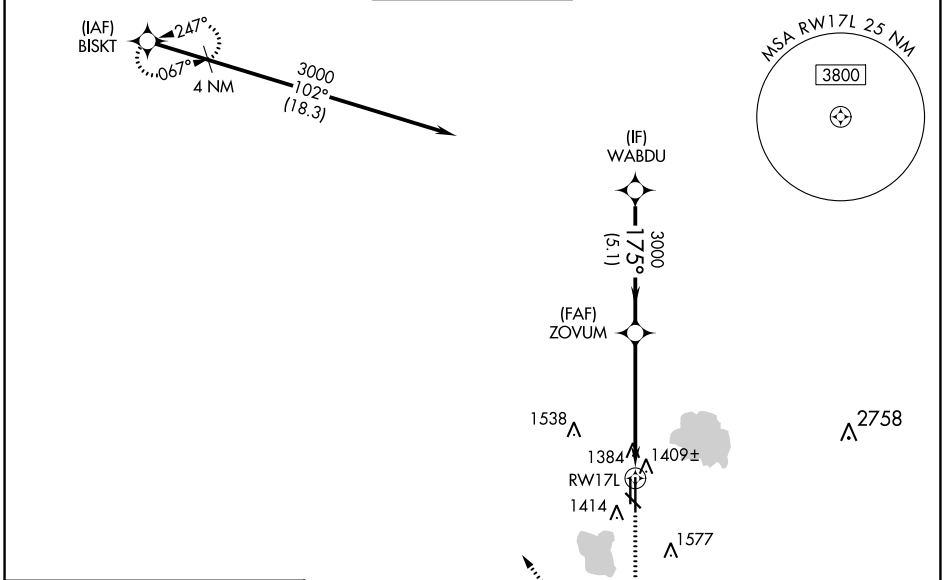
WAAS CH 72737 W17A	APP CRS 175°	Rwy ldg TDZE Apt Elev	6844 1291 1300
--	------------------------	-----------------------------	---

RNAV (GPS) RWY 17L

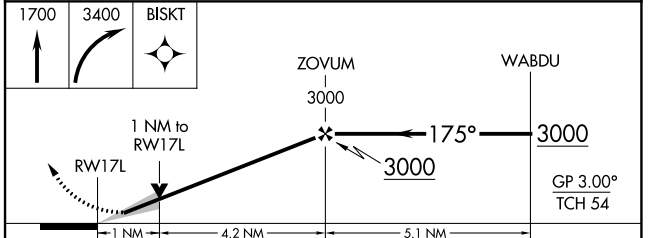
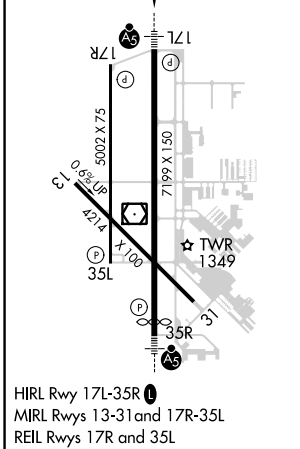
WILEY POST (PWA)

RNP APCH-GPS.		MALSR		MISSED APPROACH: Climb to 1700 then climbing right turn to 3400 direct BISKT and hold.	
For uncompensated Baro-VNAV systems, LNAV/VNAV NA below -13°C or above 54°C. For inop ALS, increase LNAV/VNAV all Cats visibility to 3/8 SM and LNAV Cat C/D visibility to 1 SM.					

ATIS 128.725	OKE CITY APP CON 124.6 266.8	WILEY POST TOWER ★ 126.9 (CTAF) 306.9	GND CON 121.7	UNICOM 122.95
------------------------	--	--	-------------------------	-------------------------



ELEV 1300	TDZE 1291
175° to RWY 17L	



CATEGORY	A	B	C	D
LPV DA		1491-1/2	200 (200-1/2)	
LNAV/VNAV DA		1590-1/2	299 (300-1/2)	
LNAV MDA	1660-1/2	369 (400-1/2)	1660-5/8	369 (400-5/8)
CIRCLING	1780-1	480 (500-1)	1880-1 1/2	1880-2
			580 (600-1 1/2)	580 (600-2)

SC-1, 13 JUN 2024 to 11 JUL 2024

SC-1, 13 JUN 2024 to 11 JUL 2024