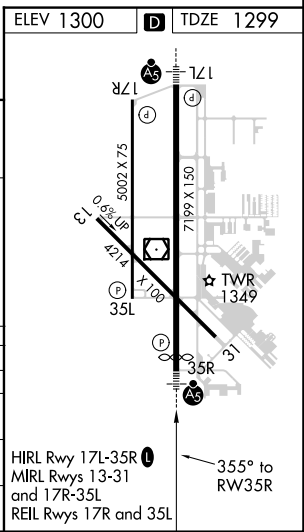
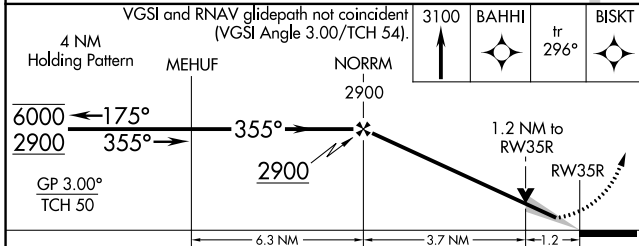
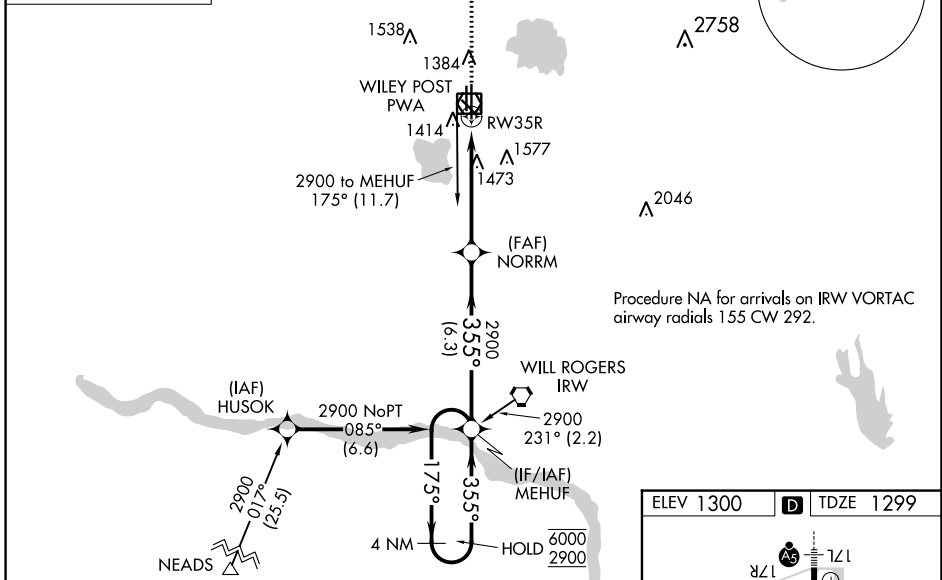
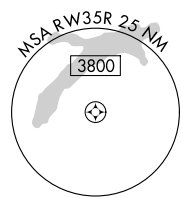
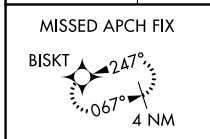


WAAS CH 42716 W35A	APP CRS 355°	Rwy Idg 6844 TDZE 1299 Apt Elev 1300
--	------------------------	---

RNAV (GPS) RWY 35R

WILEY POST (PWA)

RNP APCH-GPS.		WILEY POST TOWER ★		GND CON	UNICOM
<p>▽ For uncompensated Baro-VNAV systems, LNAV/VNAV NA below -13°C or above 54°C.</p> <p>ASR</p>		<p>128.725</p> <p>OKE CITY APP CON</p> <p>124.6 266.8</p>		<p>126.9 (CTAF) 306.9</p>	<p>121.7</p> <p>122.95</p>
<p>MALSRL</p> <p>3100</p>		<p>MISSED APPROACH: Climb to 3100 direct BAHHI and on track 296° to BISKT and hold.</p>			



CATEGORY	A	B	C	D
LPV DA	1499-1/2		200 (200-1/2)	
LNAV/VNAV DA	1755-7/8		456 (500-7/8)	
LNAV MDA	1740-1/2 441 (500-1/2)		1740-7/8 441 (500-7/8)	
CIRCLING	1780-1 480 (500-1)	1880-1 580 (600-1 1/2)		1880-2 580 (600-2)

SC-1, 13 JUN 2024 to 11 JUL 2024

SC-1, 13 JUN 2024 to 11 JUL 2024