

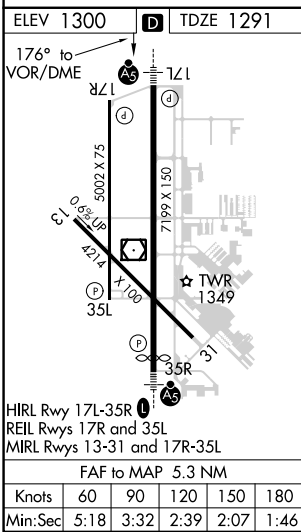
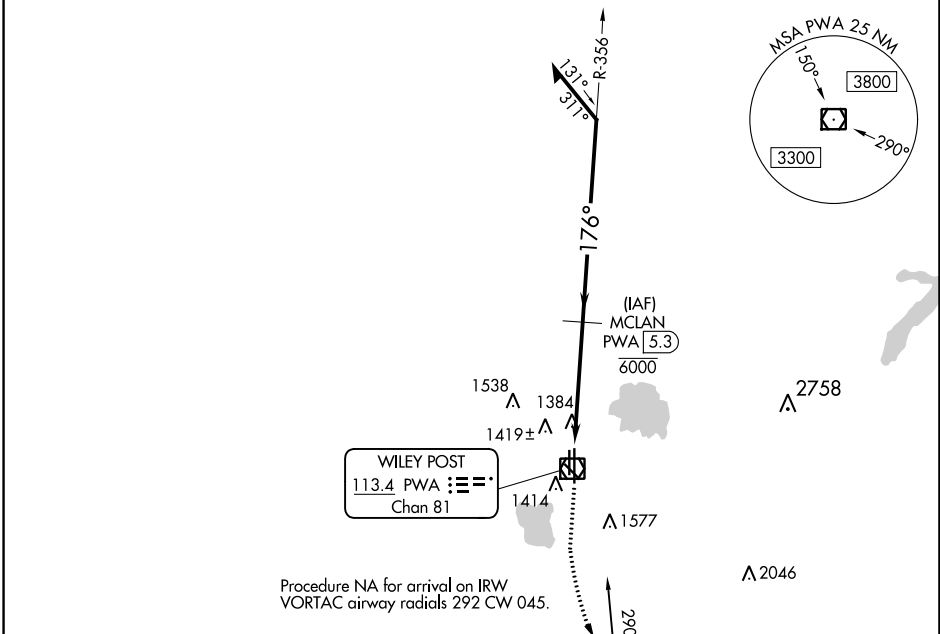
VOR/DME PWA 113.4 Chan 81	APP CRS 176°	Rwy Idg 6844 TDZE 1291 Apt Elev 1300
---	------------------------	---

VOR RWY 17L

WILEY POST (PWA)

DME required.		MALSR	MISSED APPROACH: Climb to 1700 then climbing left turn to 3000 direct IRW VORTAC and hold.
ASR			

ATIS 128.725	OKE CITY APP CON 124.6 266.8	WILEY POST TOWER★ 126.9(CTAF) 306.9	GND CON 121.7	UNICOM 122.95
------------------------	--	---	-------------------------	-------------------------



1700	3000	IRW	MCLAN PWA 5.3	Remain within 10 NM	
			6000		
			356°	2800	
			176°	2800	
			≤3.00°	TCH 54	
			0.7	1.1	3.5 NM
CATEGORY	A	B	C	D	
S-17L	1680-½	389 (400-½)	1680-⅝	389 (400-⅝)	

SC-1, 13 JUN 2024 to 11 JUL 2024

SC-1, 13 JUN 2024 to 11 JUL 2024