

OKLAHOMA CITY, OKLAHOMA

AL-739 (FAA)

22251

VOR/DME PWA <b>113.4</b> Chan <b>81</b>	APP CRS <b>348°</b>	Rwy Idg TDZE Apt Elev <b>6843</b> <b>1299</b> <b>1300</b>
---	------------------------	--

# VOR RWY 35R

WILEY POST (PWA)

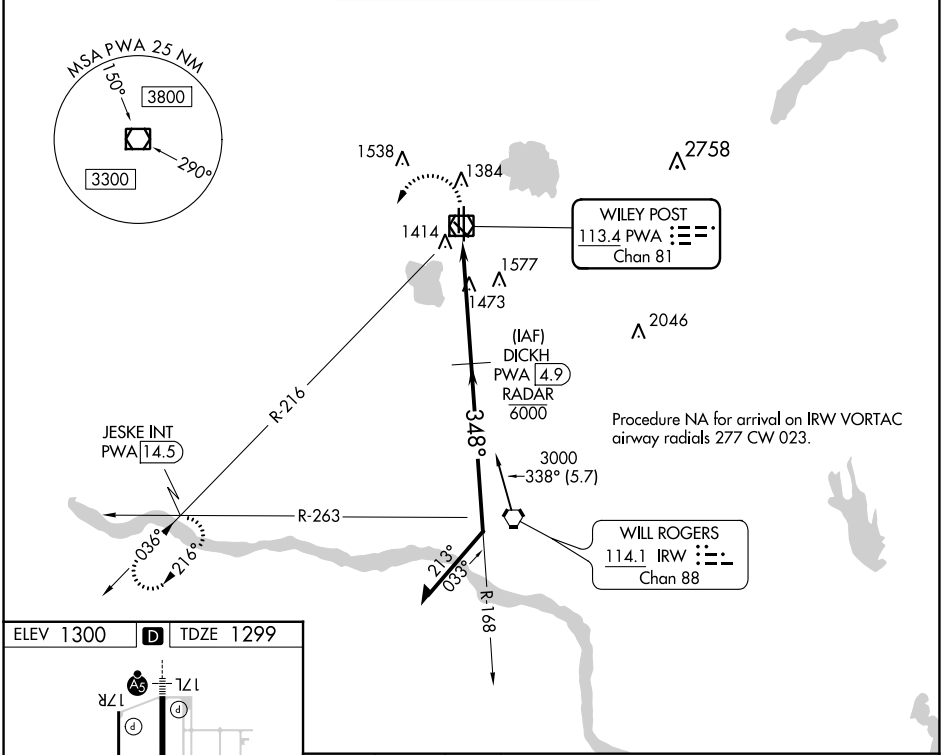
DME or RADAR required.

**ASR**

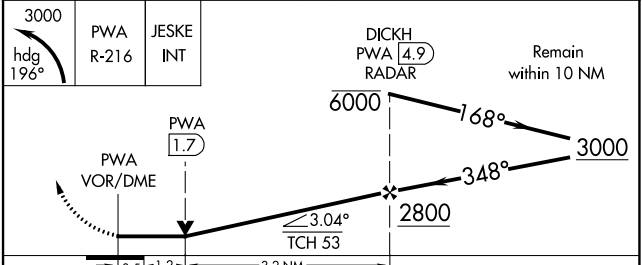
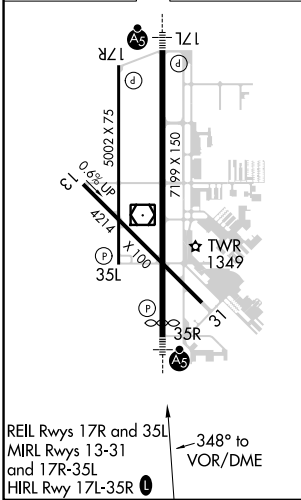
MALSR

MISSED APPROACH: Climbing left turn to 3000 on heading 196° and PWA R-216 to JESKE INT/PWA 14.5 DME and hold.

ATIS <b>128.725</b>	OKE CITY APP CON <b>124.6 266.8</b>	WILEY POST TOWER ★ <b>126.9 (CTAF) 306.9</b>	GND CON <b>121.7</b>	UNICOM <b>122.95</b>
------------------------	--	---	-------------------------	-------------------------



ELEV 1300 TDZE 1299



CATEGORY	A	B	C	D
S-35R	1740-1/2 441 (500-1/2)		1740-7/8 441 (500-7/8)	
<b>C</b> CIRCLING	1780-1 480 (500-1)		1880-1 1/2 580 (600-1 1/2)	1880-2 580 (600-2)

OKLAHOMA CITY, OKLAHOMA  
Amdt 4 24MAR22

35°32'N-97°39'W

# WILEY POST (PWA)

## VOR RWY 35R

SC-1, 13 JUN 2024 to 11 JUL 2024

SC-1, 13 JUN 2024 to 11 JUL 2024