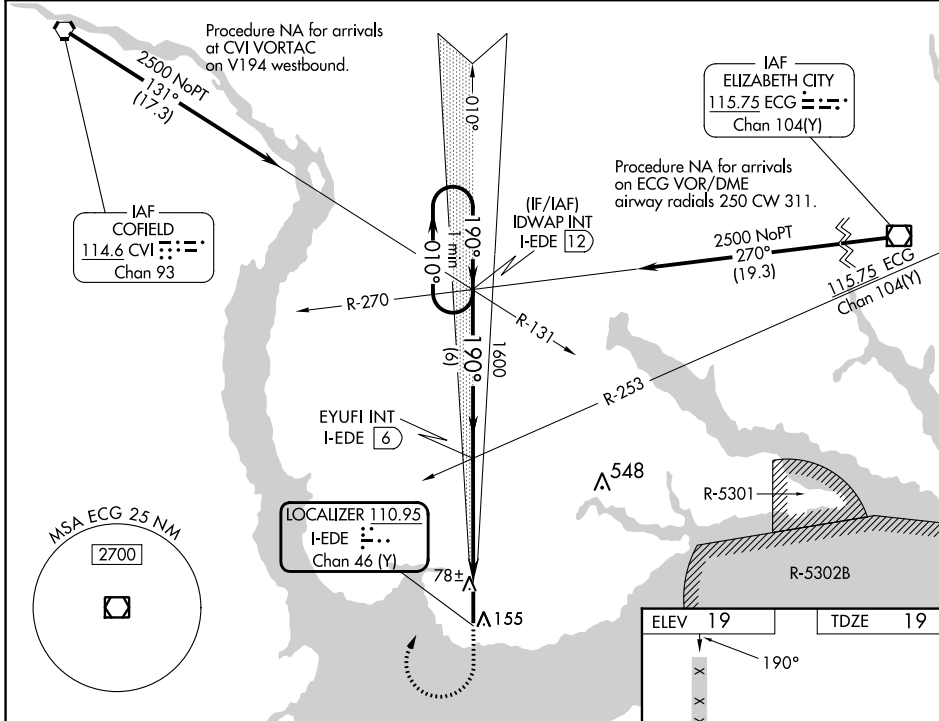


LOC/DME I-EDE <b>110.95</b> Chan <b>46(Y)</b>	APP CRS <b>190°</b>	Rwy Idg <b>6001</b> TDZE <b>19</b> Apt Elev <b>19</b>
---	------------------------	---

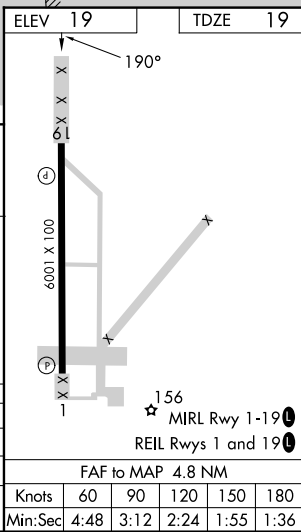
# ILS or LOC RWY 19

NORTHEASTERN RGNL (E/D/E)

DME or RADAR required for procedure entry.		<p>▼ When local altimeter setting not received, use Elizabeth City altimeter setting: increase S-ILS 19 DA to 276 feet; increase all MDAs 60 feet and S-LOC 19 visibility Cat C/D 1/8 SM, and Circling visibility Cat C 1/4 SM. VDP NA when using Elizabeth City altimeter setting. Rwy 19 helicopter visibility reduction below 3/4 SM NA.</p>	<p>MISSED APPROACH: Climb to 600 then climbing right turn to 2500 on heading 030° and I-EDE localizer N course to IDWAP INT/I-EDE 12 DME and hold.</p>
AWOS-3 <b>118.275</b>	WASHINGTON CENTER <b>123.85 279.65</b>		



<p>One Minute Holding Pattern</p> <p>↑ 600</p> <p>↘ hdg 030°</p>	<p>VGSI and ILS glidepath not coincident (VGSI Angle 3.00/TCH 48).</p>		<p>2500</p>	<p>600</p>	<p>I-EDE N crs</p>	<p>IDWAP INT</p>
	<p>2500 ← 010°</p> <p>→ 190°</p> <p>GS 3.00° TCH 43</p>	<p>IDWAP INT I-EDE 12</p>	<p>EYUFI INT I-EDE 6</p>	<p>1600</p>	<p>I-EDE 2.5</p>	<p>I-EDE 1.2</p>
CATEGORY	A	B	C	D		
S-ILS 19	219-3/4			200 (200-3/4)		
S-LOC 19	480-1	461 (500-1)	480-1 3/8	461 (500-1 3/8)		
CIRCLING	520-1	501 (600-1)	560-1 1/2	580-2		
			541 (600-1 1/2)	561 (600-2)		



SE-2, 13 JUN 2024 to 11 JUL 2024

SE-2, 13 JUN 2024 to 11 JUL 2024