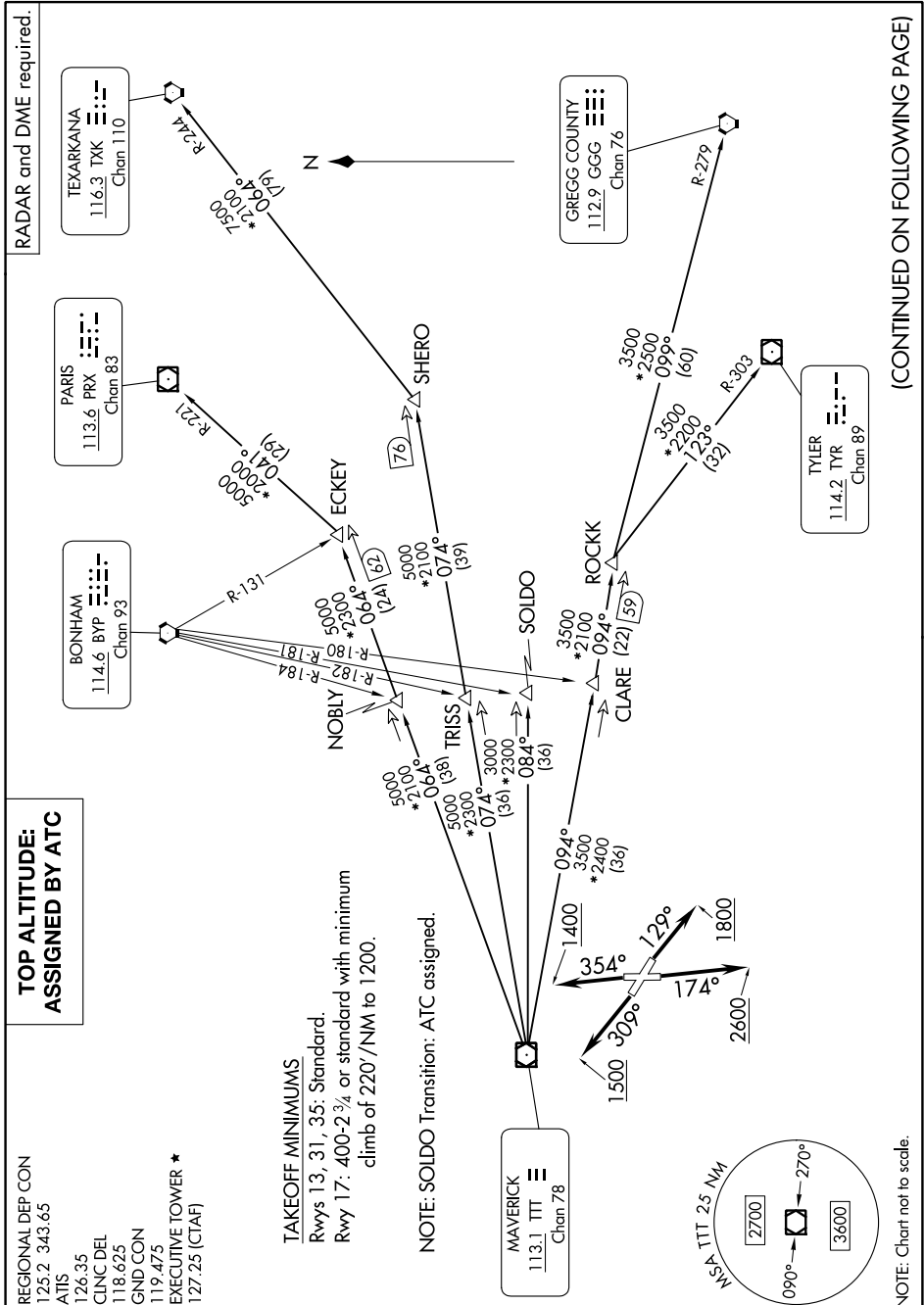


SC-2, 13 JUN 2024 to 11 JUL 2024



**TOP ALTITUDE:
 ASSIGNED BY ATC**

REGIONAL DEP CON
 125.2 343.65
 ATIS
 126.35
 CLNC DEL
 118.625
 GND CON
 119.475
 EXECUTIVE TOWER ★
 127.25 (CTAF)

TAKEOFF MINIMUMS
 Rwy 13, 31, 35: Standard.
 Rwy 17: 400-2¾ or standard with minimum
 climb of 220'/NM to 1200.

NOTE: SOLDO Transition: ATC assigned.

RADAR and DME required.

(CONTINUED ON FOLLOWING PAGE)

NOTE: Chart not to scale.

SC-2, 13 JUN 2024 to 11 JUL 2024