

LOC/DME I-RBD 110.75 Chan 44 (Y)	APP CRS 309°	Rwy Idg TDZE 6601 660 Apt Elev 661
--	------------------------	---

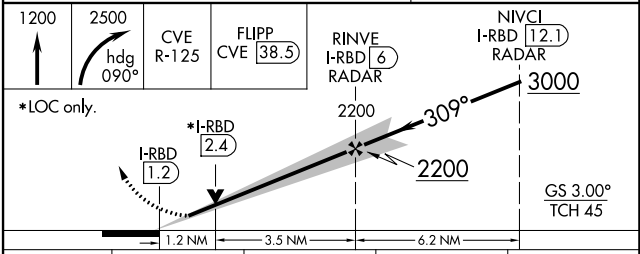
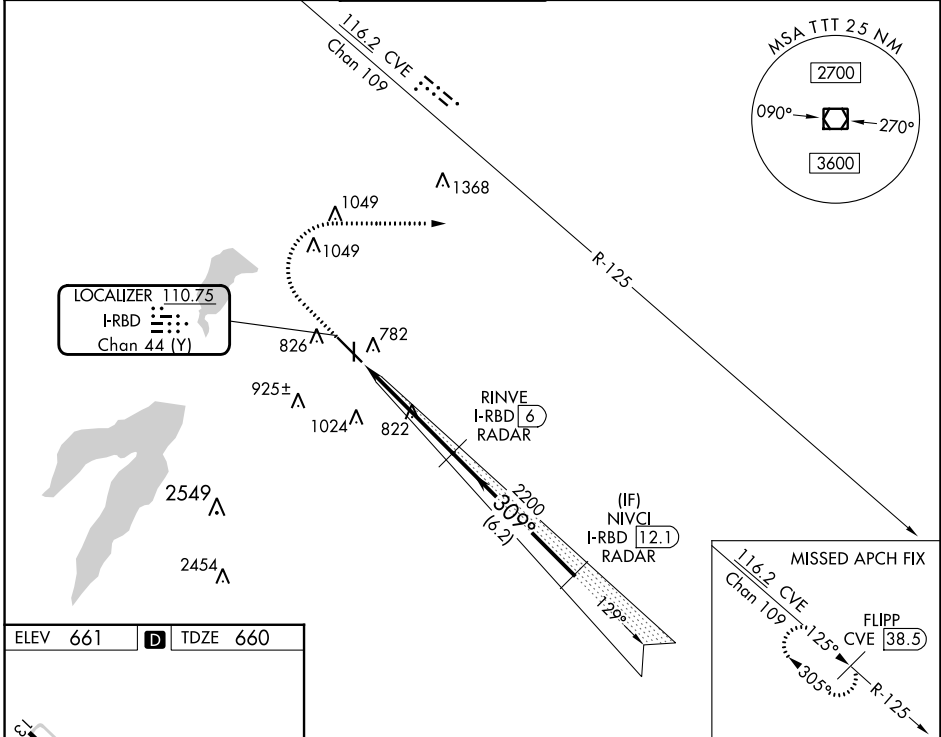
ILS or LOC RWY 31

DALLAS EXEC (R.BD)

RADAR required for procedure entry, DME or RADAR required for LOC only.

MISSED APPROACH: Climb to 2500 then climbing right turn to 3000 on heading 090° and CVE
VOR/DME R-125 to FLIPP/CVE 38.5 DME and hold.

ATIS 126.35	REGIONAL APP CON 125.2 343.65	EXECUTIVE TOWER* 127.25 (CTAF) 0	GND CON 119.475	CLNC DEL 118.625	UNICOM 122.95
-----------------------	---	---	---------------------------	----------------------------	-------------------------



REIL Rwys 13, 17, 31 and 35 MIRL Rwys 13-31 and 17-35 0 FAF to MAP 4.7 NM	Knots 60 90 120 150 180			
Min:Sec 4:42 3:08 2:21 1:53 1:34	Min:Sec 4:42 3:08 2:21 1:53 1:34			
CATEGORY S-ILS 31 S-LOC 31 CIRCLING	A		B	
	1160-1 499 (500-1)		1220-1 559 (600-1)	
C		D		
1080-1 420 (500-1)		1080-1½ 420 (500-1½)		
1340-2 679 (700-2)		1400-2½ 739 (800-2½)		

SC-2, 13 JUN 2024 to 11 JUL 2024

SC-2, 13 JUN 2024 to 11 JUL 2024