

# KUSSO ONE DEPARTURE (RNAV)

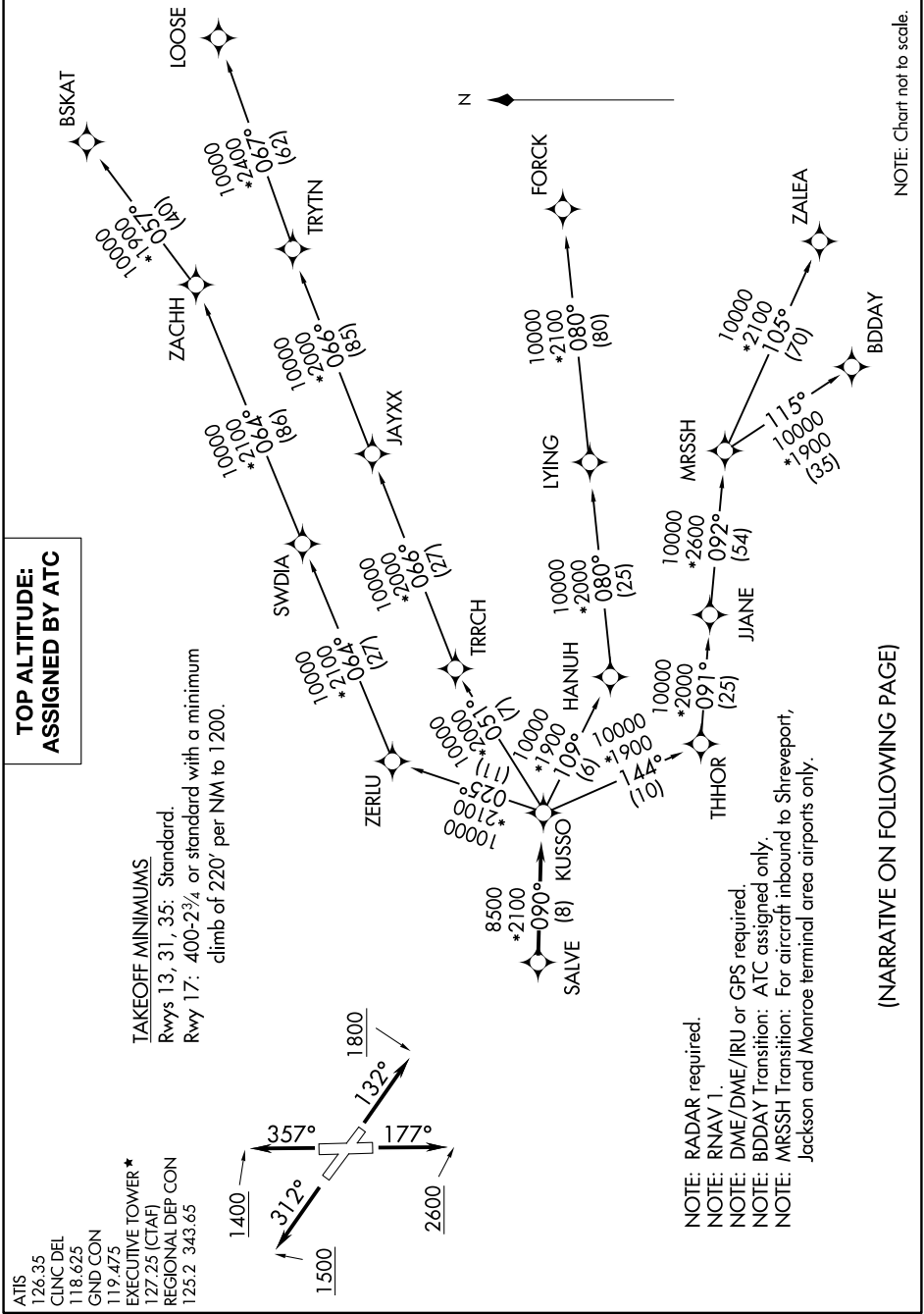
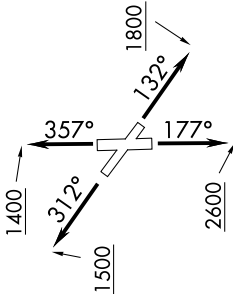
SC-2, 13 JUN 2024 to 11 JUL 2024

## TOP ALTITUDE: ASSIGNED BY ATC

ATIS 126.35  
 CLINC DEL 118.625  
 GND CON 119.475  
 EXECUTIVE TOWER \* 127.25 (CTAF)  
 REGIONAL DEP CON 125.2 343.65

### TAKEOFF MINIMUMS

Rwys 13, 31, 35: Standard.  
 Rwy 17: 400-2<sup>3</sup>/<sub>4</sub> or standard with a minimum climb of 220' per NM to 1200.



NOTE: RADAR required.  
 NOTE: RNAV 1.  
 NOTE: DME/DME/IRU or GPS required.  
 NOTE: BDDAY Transition: ATC assigned only.  
 NOTE: MRSSH Transition: For aircraft inbound to Shreveport, Jackson and Monroe terminal area airports only.

(NARRATIVE ON FOLLOWING PAGE)

NOTE: Chart not to scale.

SC-2, 13 JUN 2024 to 11 JUL 2024

# KUSSO ONE DEPARTURE (RNAV)