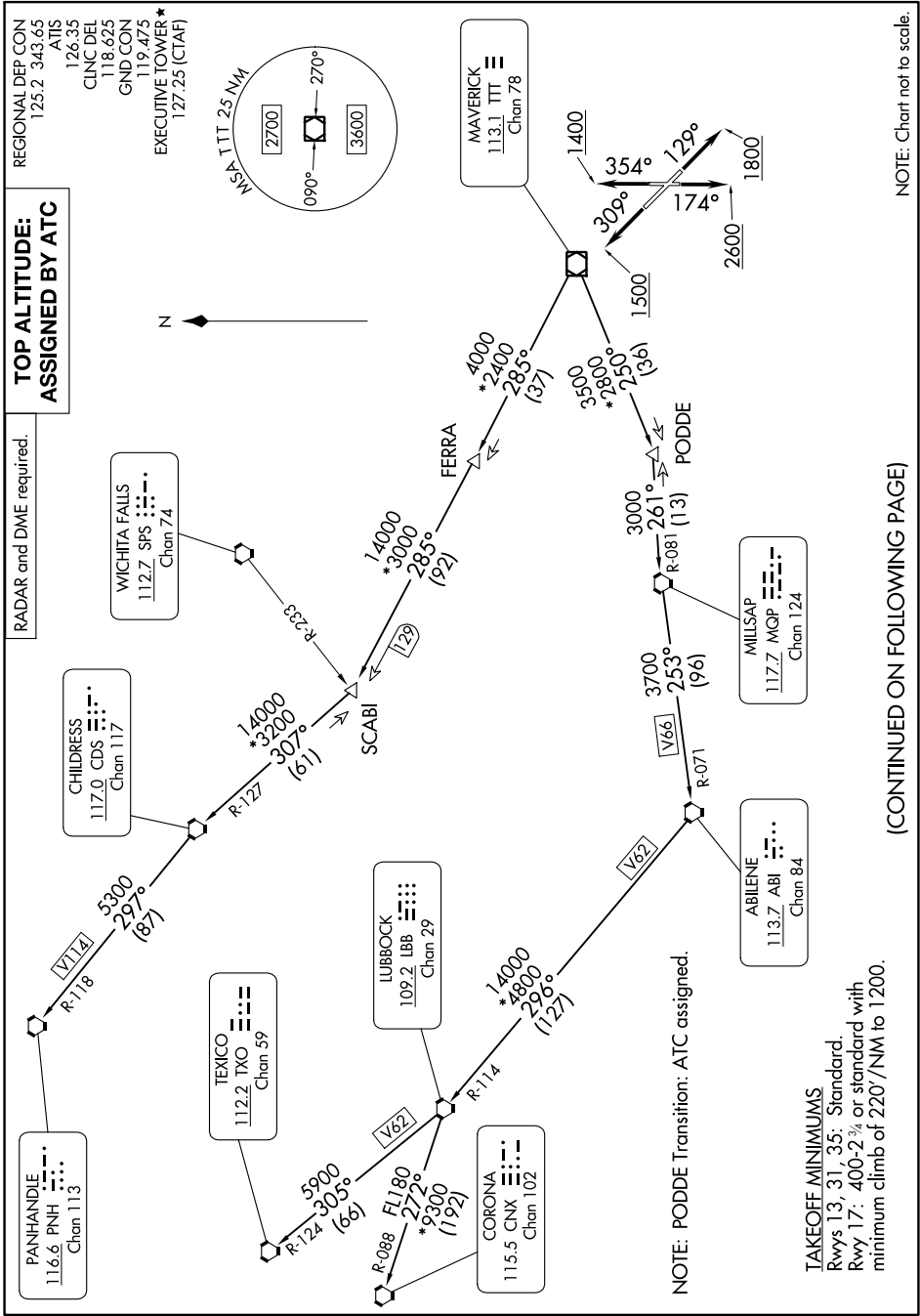


# WORTH ONE DEPARTURE

SC-2, 13 JUN 2024 to 11 JUL 2024



**TOP ALTITUDE:  
ASSIGNED BY ATC**

RADAR and DME required.

REGIONAL DEP CON  
125.2 343.65  
ATIS  
126.35  
CLNC DEL  
118.625  
GND CON  
119.475  
EXECUTIVE TOWER\*  
127.25 (CTAF)

NOTE: Chart not to scale.

(CONTINUED ON FOLLOWING PAGE)

SC-2, 13 JUN 2024 to 11 JUL 2024

# WORTH ONE DEPARTURE