

WAAS CH <b>48944</b> <b>W32A</b>	APP CRS <b>325°</b>	Rwy Idg <b>4538</b> TDZE <b>337</b> Apt Elev <b>345</b>
--	------------------------	---

# RNAV (GPS) RWY 32

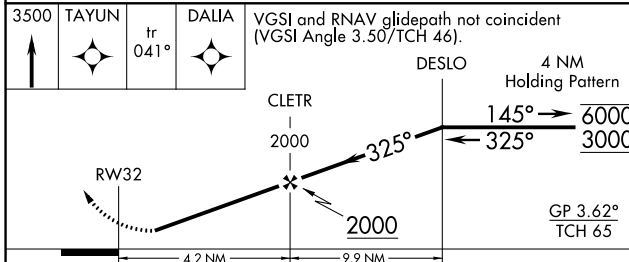
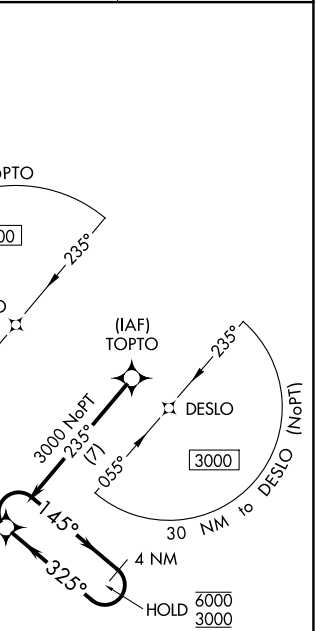
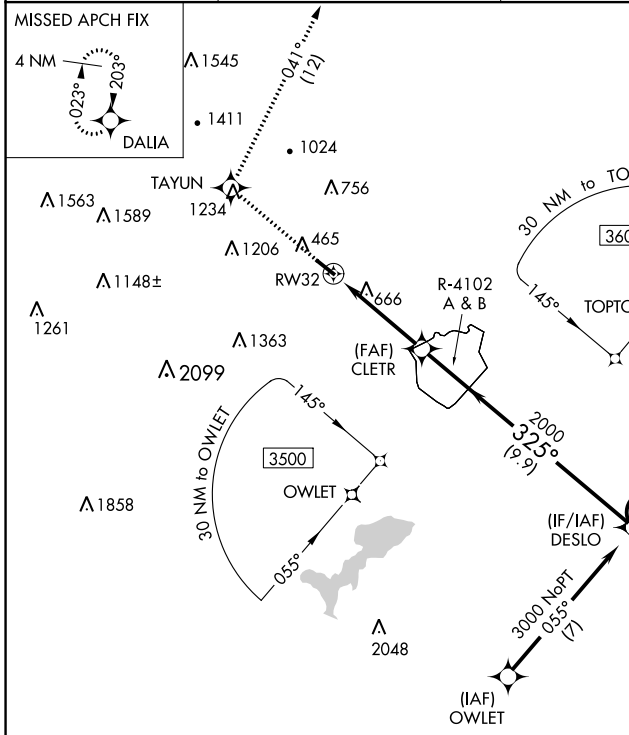
FITCHBURG MUNI (FIT)

RNP APCH - GPS.

- Rwy 32 helicopter visibility reduction below 1 SM NA.
- Procedure NA when R-4102 A & B are active.
- 22°C
- Circling NA southwest of Rwy 14-32 at night.

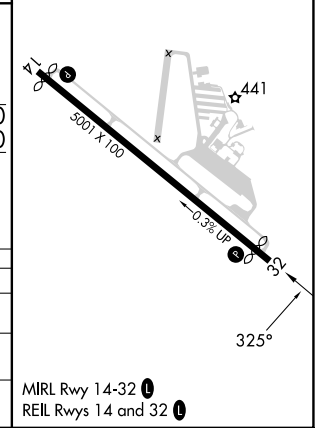
MISSED APPROACH: Climb to 3500 direct TAYUN and on track 041° to DALIA and hold.

ASOS <b>135.175</b>	BOSTON APP CON <b>124.4 279.6</b>	UNICOM <b>122.7</b> (CTAF)	<b>123.0</b>
------------------------	--------------------------------------	-------------------------------	--------------



ELEV <b>345</b>	<b>D</b>	TDZE <b>337</b>
-----------------	----------	-----------------

CATEGORY	A	B	C	D
LPV DA	773-1¼	436 (500-1¼)		NA
LNVA MDA	960-1	623 (700-1)	960-1¼ 623 (700-1¼)	NA
<b>C</b> CIRCLING	1080-1 735 (800-1)	1380-1½ 1035 (1100-1½)	1520-3 1175 (1200-3)	NA



NE-1, 13 JUN 2024 to 11 JUL 2024

NE-1, 13 JUN 2024 to 11 JUL 2024