

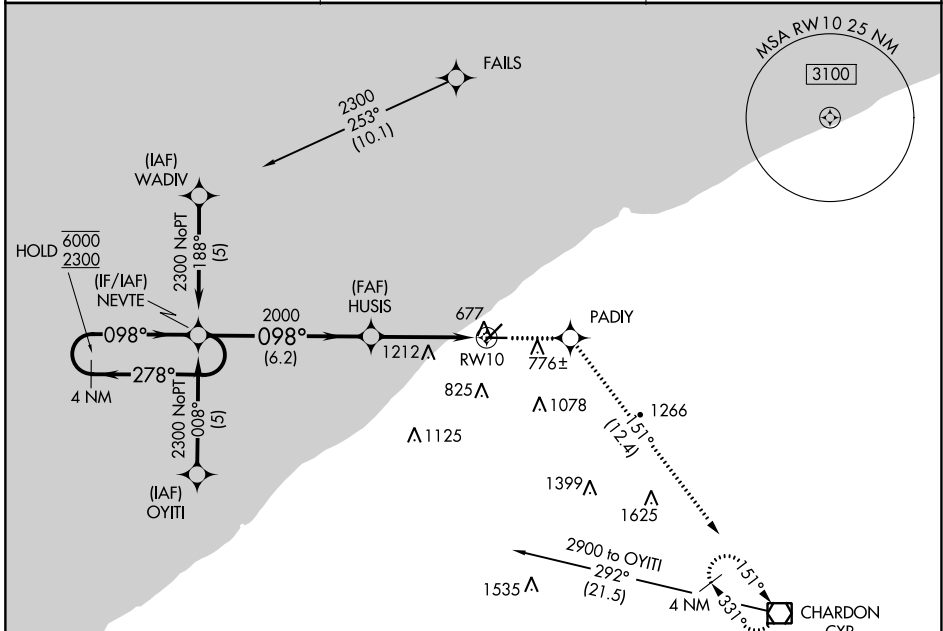
APP CRS	Rwy Idg	4272
098°	TDZE	625
	Apt Elev	626

RNAV (GPS) RWY 10

LAKE COUNTY EXEC (LNN)

RNP APCH.	MISSED APPROACH: Climb to 2900 direct PADIY and on track 151° to CXR VOR/DME and hold.
▼ ▲	Rwy 10 helicopter visibility reduction below 3/4 SM NA.

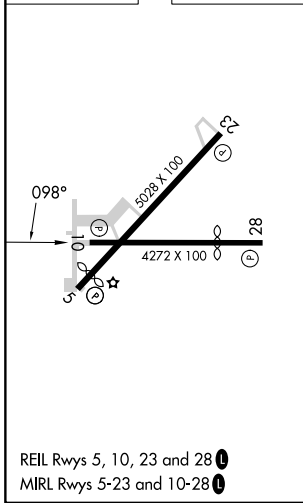
AWOS-3PT 119.225	CLEVELAND APP CON 125.35 346.325	UNICOM 122.725 (CTAF) 0
----------------------------	--	-----------------------------------



EC-2, 13 JUN 2024 to 11 JUL 2024

EC-2, 13 JUN 2024 to 11 JUL 2024

ELEV 626	TDZE 625
----------	----------



VGSi and descent angles not coincident (VGSi Angle 3.50/TCH 47).		2900	PADIY	CXR
4 NM Holding Pattern		↑	✧	tr 151°
NEVTE		HUSIS		
6000 ← 278°		2.4 NM to RWY10		
2300 → 098°		3.03° TCH 40		
2000		RWY10		
6.2 NM		1.8 NM		
		2.4 NM		
CATEGORY	A	B	C	D
LNAV MDA	1560-1 1/4	935 (1000-1 1/4)	1560-2 3/4 935 (1000-2 3/4)	NA
CIRCLING	1560-1 1/4	934 (1000-1 1/4)	1560-2 3/4 934 (1000-2 3/4)	NA