

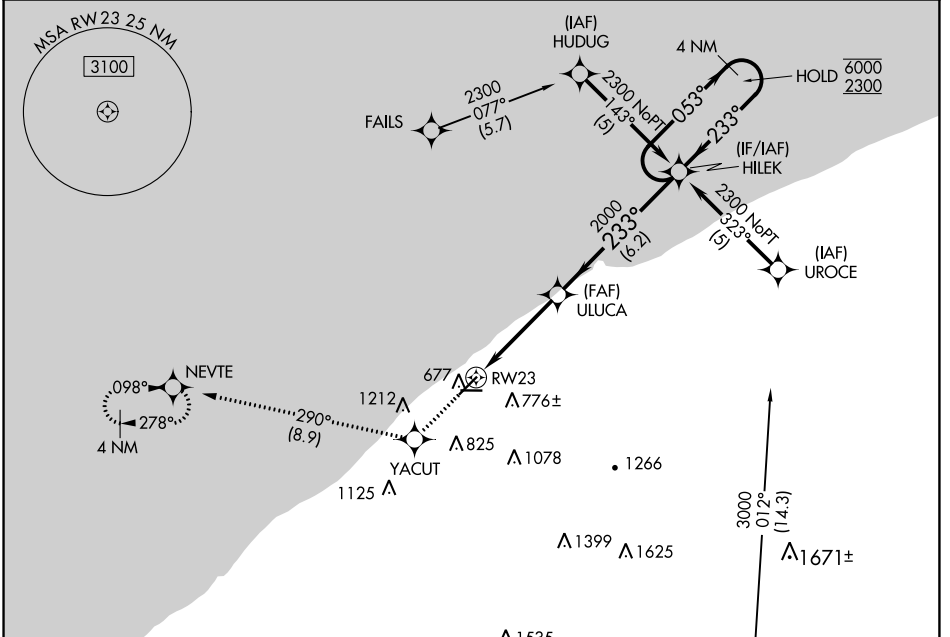
WAAS CH 82410 W23A	APP CRS 233°	Rwy Idg 5028
		TDZE 623
		Apt Elev 626

RNAV (GPS) RWY 23

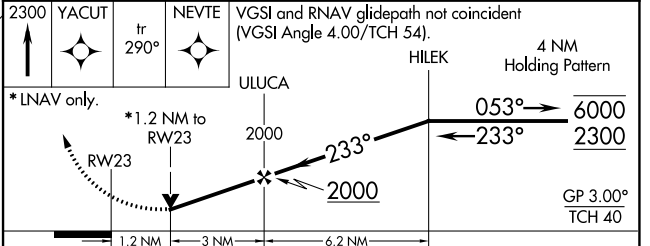
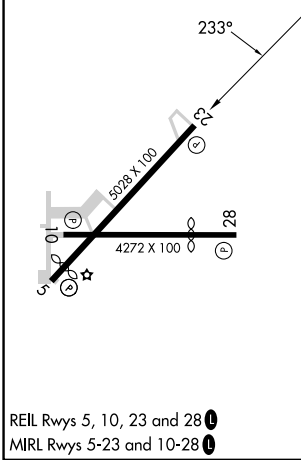
LAKE COUNTY EXEC (LNN)

RNP APCH - GPS.	MISSED APPROACH: Climb to 2300 direct YACUT and on track 290° to NEVTE and hold.
<p>▼ Rwy 23 helicopter visibility reduction below 3/4 SM NA. For uncompensated Baro-VNAV systems, LNAV/VNAV NA below -16°C or above 54°C.</p>	

AWOS-3PT 119.225	CLEVELAND APP CON 125.35 346.325	UNICOM 122.725 (CTAF) 0
----------------------------	--	-----------------------------------



ELEV 626	TDZE 623
----------	----------



CATEGORY	A	B	C	D
LPV DA		1031-1½	408 (500-1½)	NA
LNAV/VNAV DA		1142-1¾	519 (600-1¾)	NA
LNAV MDA	1200-1	577 (600-1)	1200-1½ 577 (600-1½)	NA
CIRCLING	1200-1	574 (600-1)	1520-2¾ 894 (900-2¾)	NA

EC-2, 13 JUN 2024 to 11 JUL 2024

EC-2, 13 JUN 2024 to 11 JUL 2024