

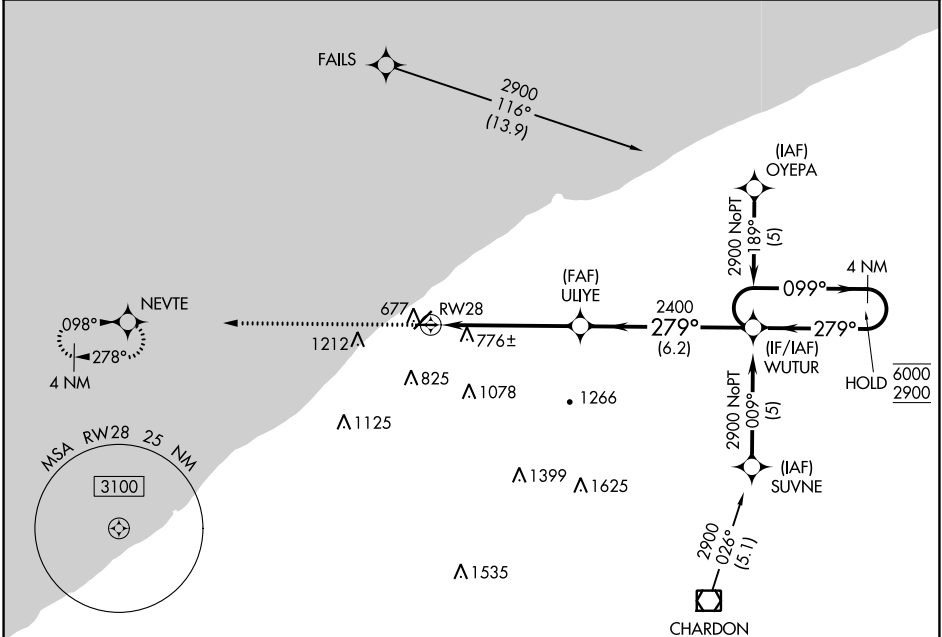
APP CRS	Rwy Idg	3148
279°	TDZE	626
	Apt Elev	626

RNAV (GPS) RWY 28

LAKE COUNTY EXEC (LNN)

RNP APCH - GPS.	MISSED APPROACH: Climb to 2300 direct NEVTE and hold.
Rwy 28 helicopter visibility reduction below 3/4 SM NA.	

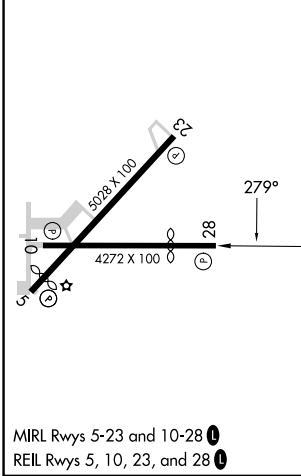
AWOS-3PT 119.225	CLEVELAND APP CON 125.35 346.325	UNICOM 122.725 (CTAF) 0
----------------------------	--	-----------------------------------



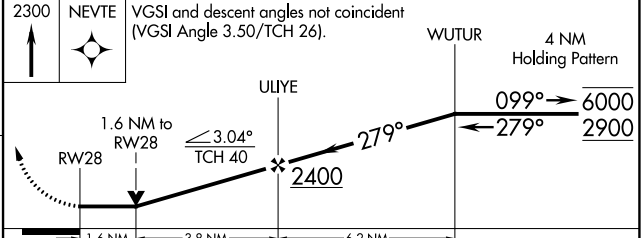
EC-2, 13 JUN 2024 to 11 JUL 2024

EC-2, 13 JUN 2024 to 11 JUL 2024

ELEV 626	TDZE 626
----------	----------



2016 Δ



CATEGORY	A	B	C	D
LNAV MDA	1260-1	634 (700-1)	1260-1 $\frac{3}{4}$ 634 (700-1 $\frac{3}{4}$)	NA
CIRCLING	1260-1	634 (700-1)	1520-2 $\frac{3}{4}$ 894 (900-2 $\frac{3}{4}$)	NA