

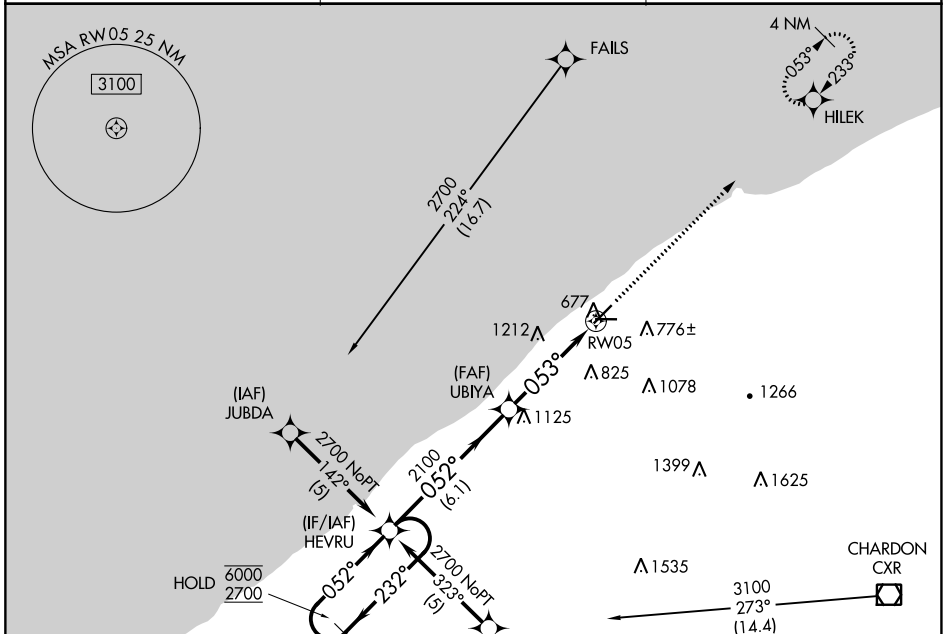
APP CRS	Rwy Idg	<b>4600</b>
<b>053°</b>	TDZE	<b>624</b>
	Apt Elev	<b>626</b>

# RNAV (GPS) RWY 5

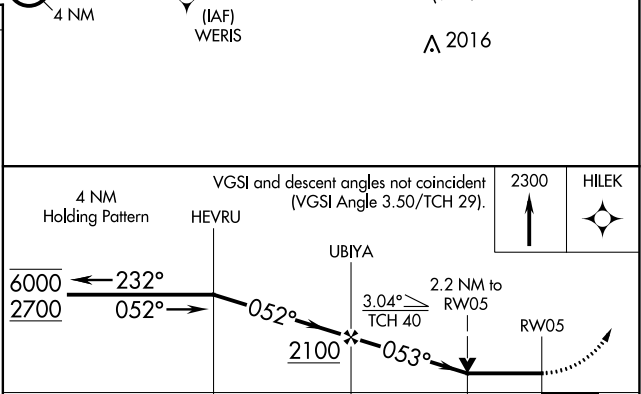
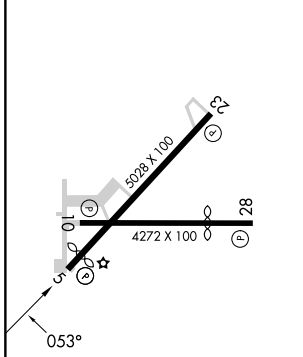
LAKE COUNTY EXEC (LNN)

RNP APCH - GPS.	MISSED APPROACH: Climb to 2300 direct HILEK and hold.
<b>▽</b> <b>▲</b> Rwy 5 helicopter visibility reduction below ¼ SM NA.	

AWOS-3PT <b>119.225</b>	CLEVELAND APP CON <b>125.35 346.325</b>	UNICOM <b>122.725 (CTAF) 0</b>
----------------------------	--	-----------------------------------



ELEV	626	TDZE	624
------	-----	------	-----



CATEGORY	A	B	C	D
LNAV MDA	1460-1 836 (900-1)	1460-1¼ 836 (900-1¼)	1460-2½ 836 (900-2½)	NA
CIRCLING	1460-1¼	834 (900-1¼)	1520-2¾ 894 (900-2¾)	NA

WILLOUGHBY, OHIO  
Orig-C 08SEP22

41°41'N-81°23'W

# LAKE COUNTY EXEC (LNN)

## RNAV (GPS) RWY 5

EC-2, 13 JUN 2024 to 11 JUL 2024

EC-2, 13 JUN 2024 to 11 JUL 2024