

MARYSVILLE, CALIFORNIA

# HI-TACAN Z RWY 33

TACAN BAB Chan 23	APCH CRS 317°	Rwy ldg 12,001	TDZE 105
		Arprt Elev 113	

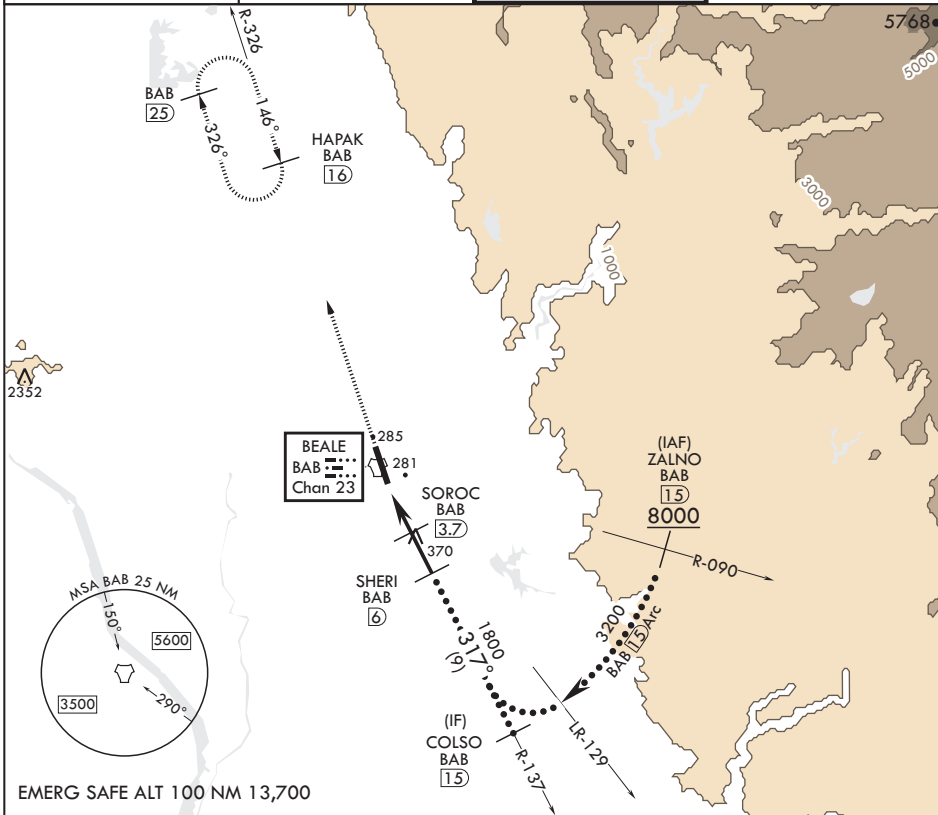
- (USAF)

BEALE AFB (KBAB)

⚠ \* When ALS inop, increase CAT CDE vis to 1 1/4 miles.  
 \*\* Circling not authorized NE of Rwy 15-33.

ALSF-1  
 MISSED APPROACH: Climb to 3600, intercept BAB TACAN R-326 to HAPAK and hold.

ATIS* 124.55 273.5	NORCAL APP CON 125.4 259.1	TOWER* 119.4 284.75	GND CON 121.6 257.75
-----------------------	-------------------------------	------------------------	-------------------------

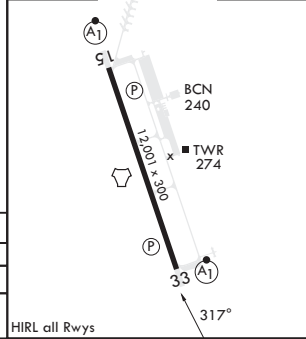
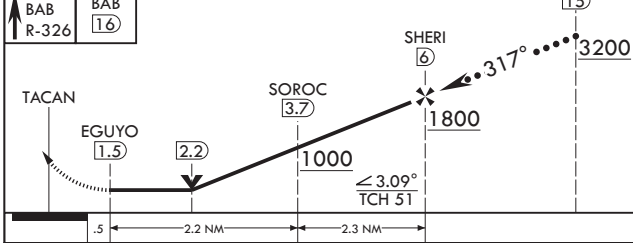


SW-2, 13 JUN 2024 to 11 JUL 2024

SW-2, 13 JUN 2024 to 11 JUL 2024

EMERG SAFE ALT 100 NM 13,700

3600 HAPAK BAB (16) R-326	COLSO (15) ELEV 113 TDZE 105
---------------------------------	------------------------------------



CATEGORY	C	D	E
S-33*	540/40	435	(500-¾)
CIRCLING**	600-1½ 487 (500-1½)	800-2¼ 687 (700-2¼)	800-2½ 687 (700-2½)

HIRL all Rwys

MARYSVILLE, CALIFORNIA

39°08'N - 121°26'W

BEALE AFB (KBAB)

Amdt 6 25JAN24

# HI-TACAN Z RWY 33