

BURNS FLAT, OKLAHOMA

AL-778 (FAA)

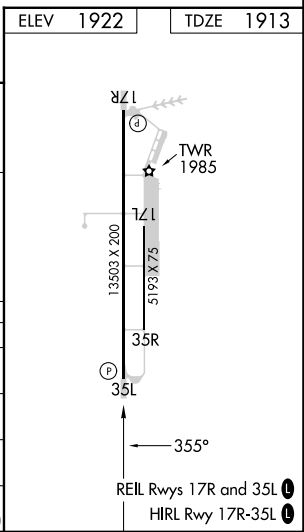
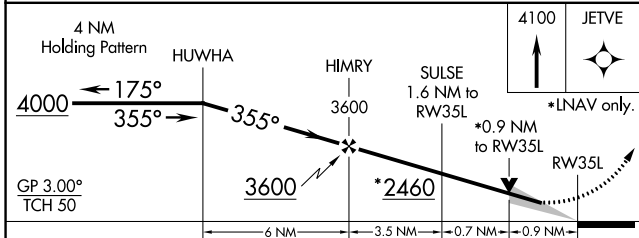
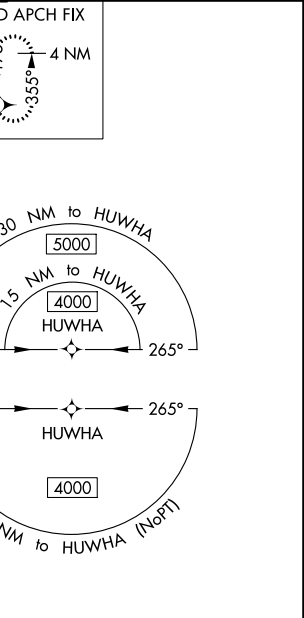
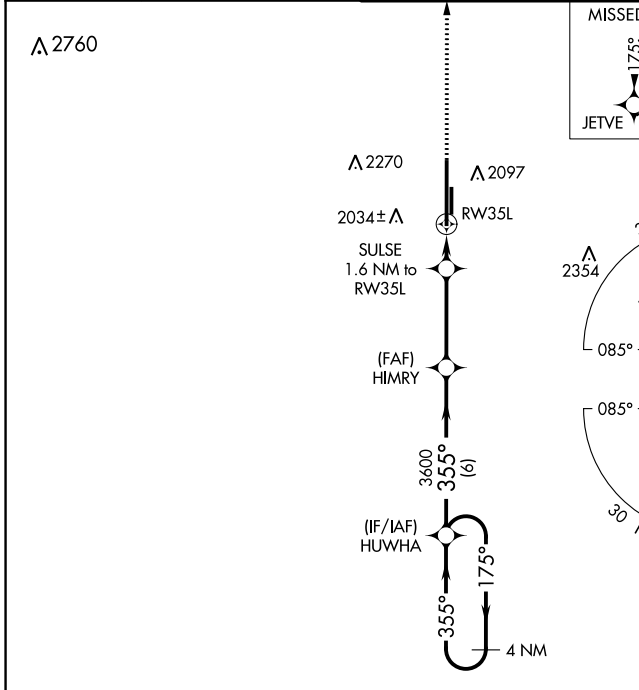
23110

WAAS CH 40217 W35A	APP CRS 355°	Rwy Idg 13503 TDZE 1913 Apt Elev 1922
--	------------------------	--

RNAV (GPS) RWY 35L

CLINTON/SHERMAN (CS/M)

▽ For uncompensated Baro-VNAV systems, LNAV/VNAV NA below -12°C (11°F) or above 54°C (130°F). Circling NA east of Rwy 17R-35L. DME/DME RNP-0.3 NA.		MISSED APPROACH: Climb to 4100 direct JETVE and hold.		
ASOS 118.45	FORT WORTH CENTER 128.4 269.37	CLINTON/SHERMAN TOWER* 119.6 (CTAF) 256.9	GND CON 121.7 239.0	UNICOM 122.95



CATEGORY	A	B	C	D	E
LPV DA		2113-¾	200 (200-¾)		
LNAV/VNAV DA		2163-¾	250 (300-¾)		
LNAV MDA		2240-1	327 (400-1)		
C CIRCLING	2340-1 418 (500-1)	2380-1 458 (500-1)	2380-1½ 458 (500-1½)	2620-2¼ 698 (700-2¼)	2620-2½ 698 (700-2½)

BURNS FLAT, OKLAHOMA
Amdt 1A 17AUG17

35°20'N-99°12'W

CLINTON/SHERMAN (CS/M)

RNAV (GPS) RWY 35L

SC-1, 13 JUN 2024 to 11 JUL 2024

SC-1, 13 JUN 2024 to 11 JUL 2024