



LOC I-ITH	APP CRS	Rwy Idg	6602
108.7	325°	TDZE	1099
		Apt Elev	1099

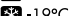
ILS or LOC RWY 32

ITHACA TOMPKINS INTL (ITH)

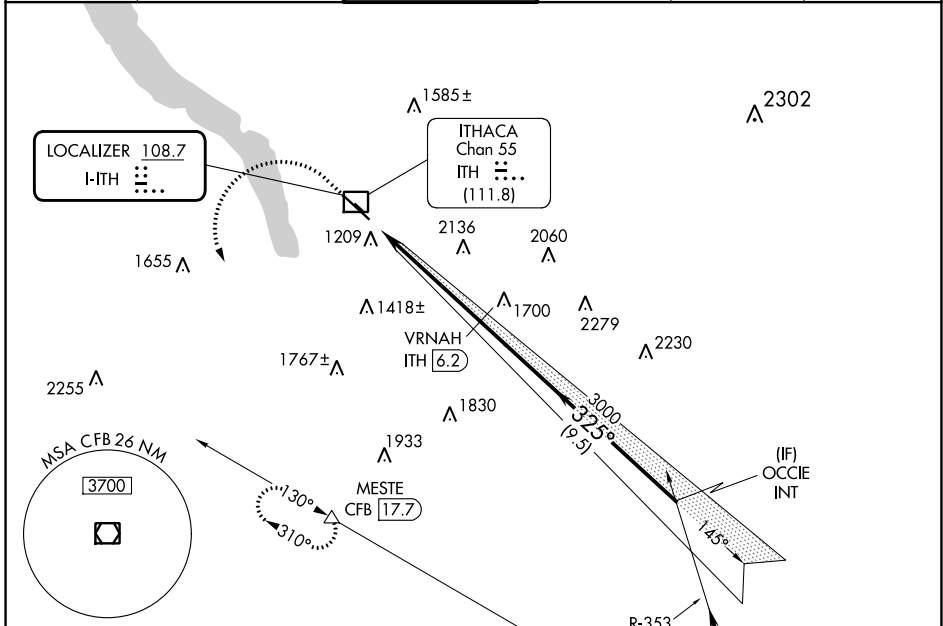
DME required.

MALSR  MISSED APPROACH: Climb to 2600 then climbing left turn to 4000 on heading 180° and CFB VOR/DME R-310 to MESTE/CFB VOR/DME 17.7 DME and hold.

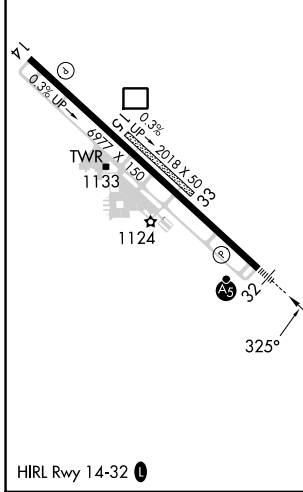
 Circling NA to Rws 15 and 33. Inop table does not apply to S-ILS 32. DME from ITH DME. Simultaneous reception of I-ITH LOC and ITH DME required.

 -19°C

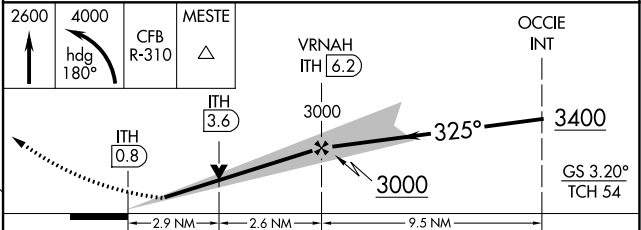
ATIS	ELMIRA APP CON ★	ITHACA TOWER ★	GND CON	CLNC DEL	UNICOM
125.175	124.3 257.8	119.6 (CTAF) 0	121.8	121.8	122.95



ELEV 1099	D	TDZE 1099
-----------	----------	-----------



Procedure NA for arrival on CFB VOR/DME airway radials 310 CW 015 and V374 northwest bound.



CATEGORY	A	B	C	D
S-ILS 32	1349/24		250 (300-½)	
S-LOC 32	2140/40 1041 (1100-¾)	2140/55 1041 (1100-1)	2140-2½ 1041 (1100-2½)	
C CIRCLING	2140-1¼ 1041 (1100-1¼)	2140-1½ 1041 (1100-1½)	2140-3 1041 (1100-3)	2440-3 1341 (1400-3)

NE-2, 13 JUN 2024 to 11 JUL 2024

NE-2, 13 JUN 2024 to 11 JUL 2024