

WAAS CH 62815 W32A	APP CRS 325°	Rwy Idg 6602 TDZE 1099 Aprt Elev 1099
--	------------------------	--

RNAV (GPS) RWY 32

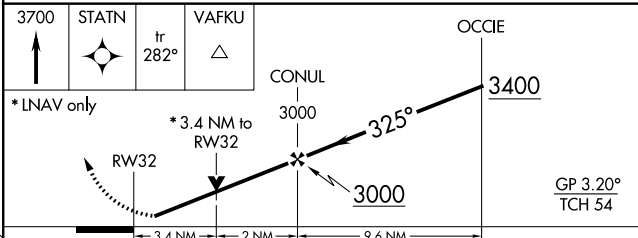
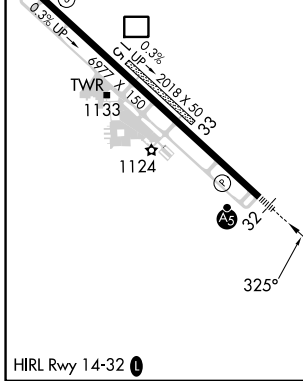
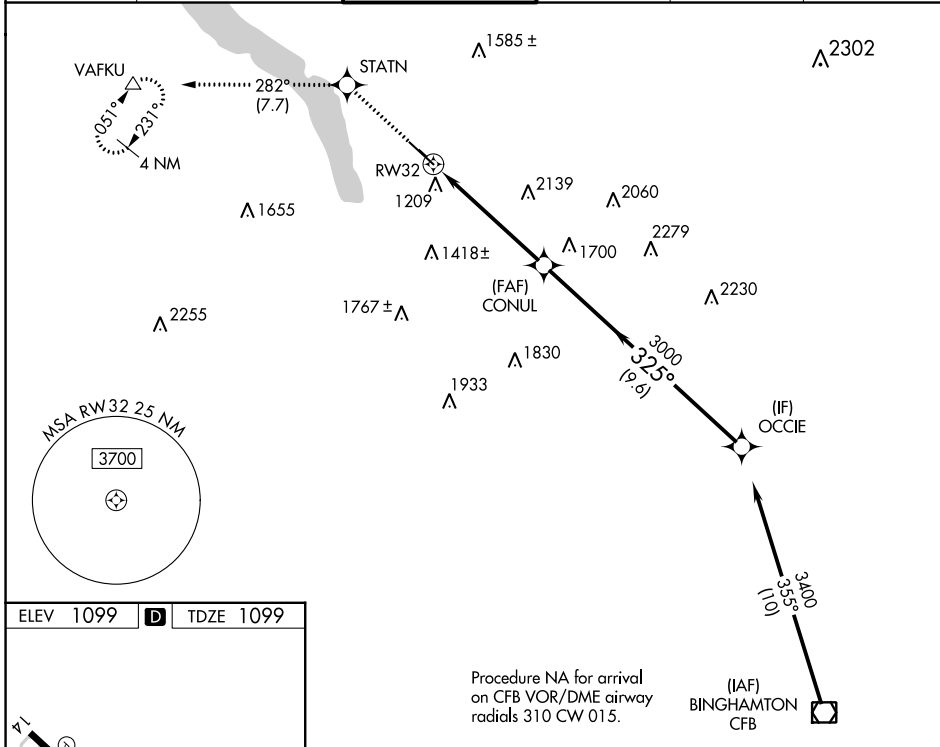
ITHACA TOMPKINS INTL (ITH)

RNP APCH

Circling NA to Rwy's 15 and 33. Inop table does not apply to LNAV Cat A. Rwy 32 helicopter visibility reduction below 3/4 SM NA. When local altimeter setting not received, use Elmira altimeter setting and increase all DA 84 feet and all MDA 100 feet. For inop MALSR, increase LNAV Cat B visibility 1/4 mile. For inop MALSR, when using Elmira altimeter setting, increase LPV all Cats visibility to RVR 6000, and increase LNAV Cat B visibility to 1/2.

MALSR
 MISSED APPROACH:
 Climb to 3700 direct STATN and on track 282° to VAFKU and hold.

ATIS 125.175	ELMIRA APP CON ★ 124.3 257.8	ITHACA TOWER ★ 119.6 (CTAF) 0	GND CON 121.8	CLNC DEL 121.8	UNICOM 122.95
------------------------	--	---	-------------------------	--------------------------	-------------------------



CATEGORY	A	B	C	D
LPV DA	1385/40		286 (300-3/4)	
LNAV MDA	2300/60 1201 (1300-1 1/4)		2300-2 1/2 1201 (1300-2 1/2)	
C CIRCLING	2300-1 1/4 1201 (1300-1 1/4)		2300-3 1201 (1300-3) 2440-3 1341 (1400-3)	

NE-2, 13 JUN 2024 to 11 JUL 2024

NE-2, 13 JUN 2024 to 11 JUL 2024