

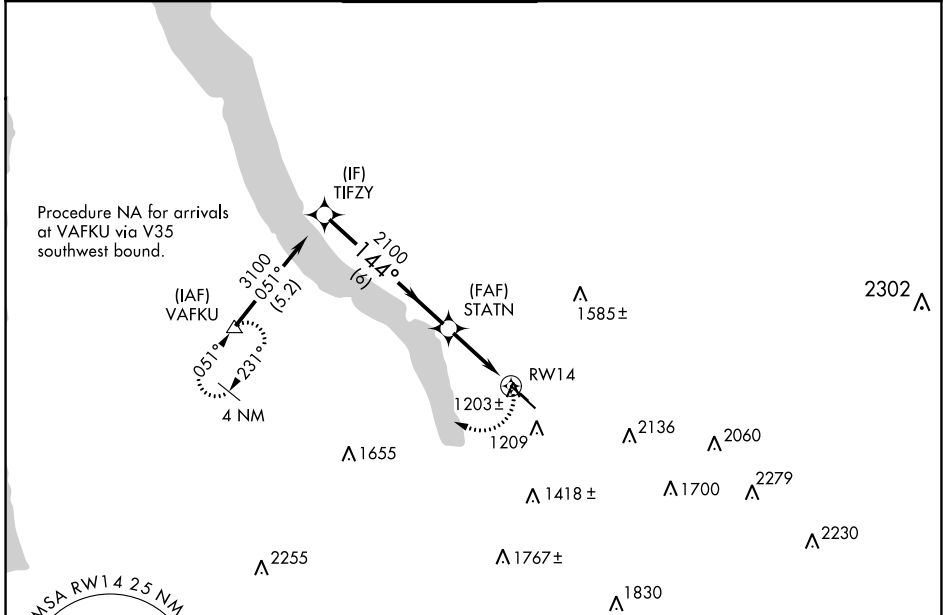
APP CRS	Rwy Idg	6602
144°	TDZE	1083
	Apt Elev	1099

RNAV (GPS) Y RWY 14

ITHACA TOMPKINS INTL (ITH)

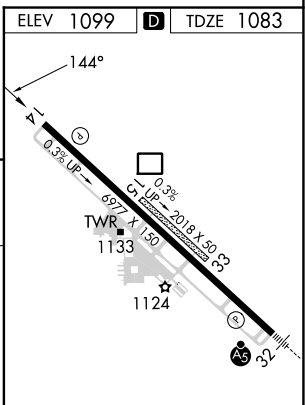
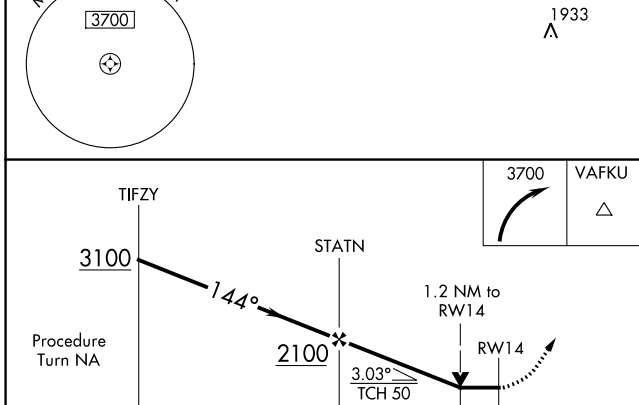
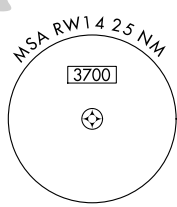
<p>-19°C</p>	<p>DME/DME RNP-0.3 NA. Helicopter visibility reduction below ¾ SM NA. Circling NA to Rwys 15 and 33.</p>	<p>MISSED APPROACH: Climbing right turn to 3700 direct VAFKU and hold.</p>
--------------	--	--

ATIS 125.175	ELMIRA APP CON ★ 124.3 257.8	ITHACA TOWER ★ 119.6 (CTAF) 0	GND CON 121.8	CLNC DEL 121.8	UNICOM 122.95
------------------------	--	---	-------------------------	--------------------------	-------------------------



NE-2, 13 JUN 2024 to 11 JUL 2024

NE-2, 13 JUN 2024 to 11 JUL 2024



CATEGORY	A	B	C	D
LNVA MDA	1500-1	417 (500-1)	1500-1¼	417 (500-1¼)
CIRCLING	2040-1¼	941 (1000-1¼)	2040-2¾ 941 (1000-2¾)	NA

HIRL Rwy 14-32