

(CHIEF9.MCI) 23278

# CHIEF NINE DEPARTURE

AL-780 (FAA)

KANSAS CITY INTL (MCI)  
KANSAS CITY, MISSOURI

KANSAS CITY DEP CON  
124.7 284.7  
D-ATIS  
128.375  
CLNC DEL  
135.7

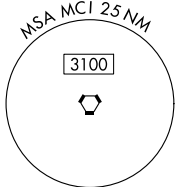
RADAR required.

**TOP ALTITUDE:  
10000**

ST. JOSEPH  
115.5 STJ  
Chan 102

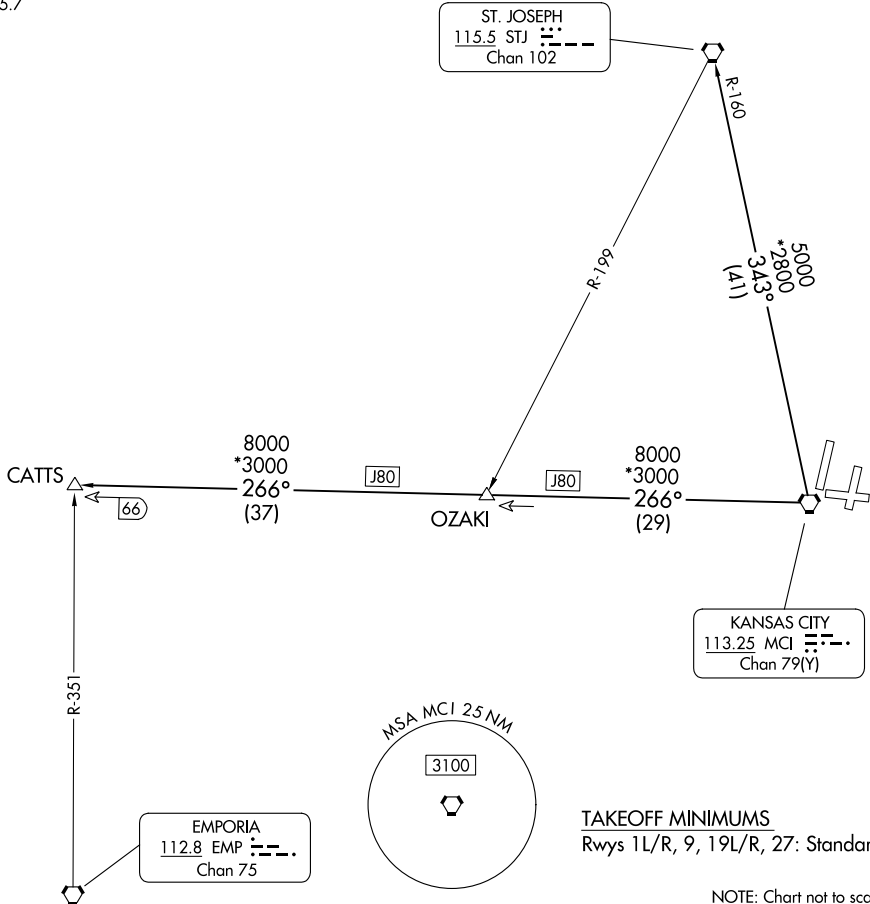
KANSAS CITY  
113.25 MCI  
Chan 79(Y)

EMPORIA  
112.8 EMP  
Chan 75



**TAKEOFF MINIMUMS**  
Rwys 1L/R, 9, 19L/R, 27: Standard.

NOTE: Chart not to scale.



NC-3, 13 JUN 2024 to 11 JUL 2024

NC-3, 13 JUN 2024 to 11 JUL 2024

## DEPARTURE ROUTE DESCRIPTION

**TAKEOFF ALL RUNWAYS:** Climb on assigned heading for RADAR vectors to appropriate route. Maintain 10000 or as assigned by ATC, expect filed altitude 10 minutes after departure.

**CATTS TRANSITION (CHIEF9.CATTS):** From over MCI VORTAC on MCI R-266 to CATTS.

**ST. JOSEPH TRANSITION (CHIEF9.STJ):** From over MCI VORTAC on MCI R-343 and STJ R-160 to STJ VORTAC.

**CHIEF NINE DEPARTURE**  
(CHIEF9.MCI) 05OCT23

KANSAS CITY, MISSOURI  
KANSAS CITY INTL (MCI)