

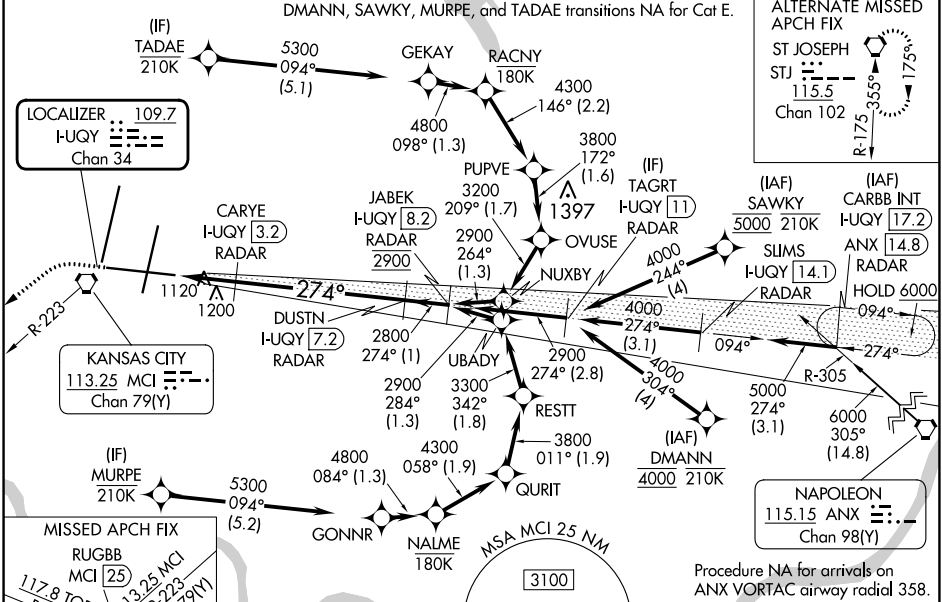
LOC/DME I-UQY <b>109.7</b> Chan <b>34</b>	APP CRS <b>274°</b>	Rwy Idg TDZE Apt Elev	<b>9501</b> <b>1027</b> <b>1027</b>
---	------------------------	-----------------------------	---

# ILS or LOC RWY 27

## KANSAS CITY INTL (MCI)

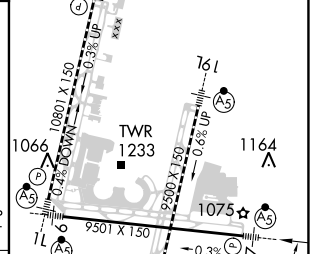
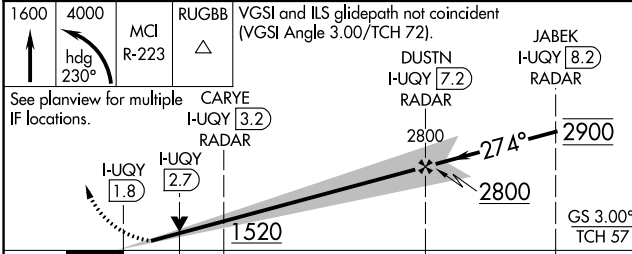
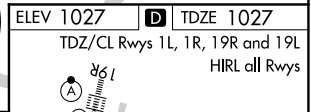
RNP APCH - GPS. From DMANN or SAWKY or MURPE or TADAE. DME or RADAR required.		MALS R 	MISSED APPROACH: Climb to 1600 then climbing left turn to 4000 on heading 230° and MCI R-223 to RUGBB INT/MCI 25 DME and hold.
<p>▼ For inop ALS, increase S-ILS 27 Cat E visibility to RVR 4000 and S-LOC 27 Cat C/D/E visibility to RVR 5500.</p> <p>*RVR 1800 authorized with use of FD or AP or HUD to DA.</p>			

D-ATIS <b>128.375</b>	KANSAS CITY APP CON <b>120.95 318.1</b>	INTERNATIONAL TOWER <b>128.2 254.25</b>	GND CON <b>121.8</b>	CLNC DEL <b>135.7</b>	CPDLC
--------------------------	--	--	-------------------------	--------------------------	-------



NC-3, 13 JUN 2024 to 11 JUL 2024

NC-3, 13 JUN 2024 to 11 JUL 2024



CATEGORY	A	B	C	D	E
S-ILS 27*	1227/24 200 (200-½)				
S-LOC 27	1380/24	353 (400-½)	1380/30	353 (400-½)	
CIRCLING	1540-1	513 (600-1)	1540-1½	1580-2	553 (600-2)

FAF to MAP 5.4 NM					
Knots	60	90	120	150	180
Min:Sec	5:24	3:36	2:42	2:10	1:48