

(RACER8.MCI) 24137

# RACER EIGHT DEPARTURE

AL-780 (FAA)

KANSAS CITY INTL (MCI)  
KANSAS CITY, MISSOURI

RADAR required.

**TOP ALTITUDE:  
10000**

KANSAS CITY DEP CON  
123.95 318.1 (BUTLER/SPRINGFIELD TRANSITION)  
124.7 284.7 (DOSOA TRANSITION)  
D-ATIS  
128.375  
CLNC DEL  
135.7

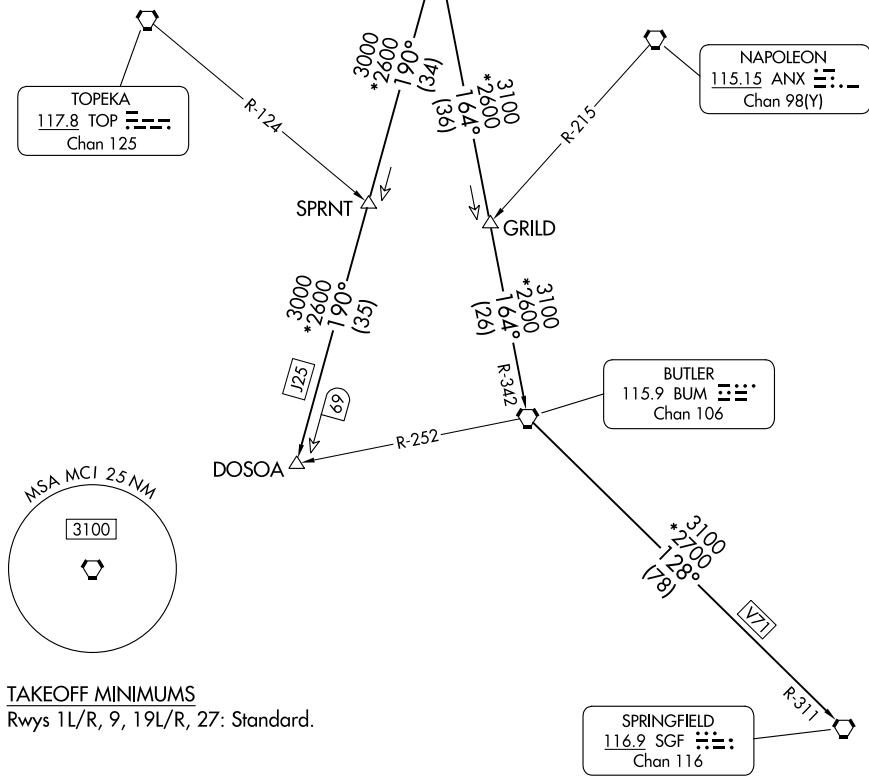
KANSAS CITY  
113.25 MCI  
Chan 79(Y)

NAPOLEON  
115.15 ANX  
Chan 98(Y)

TOPEKA  
117.8 TOP  
Chan 125

BUTLER  
115.9 BUM  
Chan 106

SPRINGFIELD  
116.9 SGF  
Chan 116



### TAKEOFF MINIMUMS

Rwys 1L/R, 9, 19L/R, 27: Standard.

NOTE: Chart not to scale.

### DEPARTURE ROUTE DESCRIPTION

**TAKEOFF ALL RUNWAYS:** Climb on assigned heading for RADAR vectors to appropriate route. Maintain 10000 or as assigned by ATC, expect filed altitude 10 minutes after departure.

**BUTLER TRANSITION (RACER8.BUM):** From over MCI VORTAC on MCI R-164 and BUM R-342 to BUM VORTAC.

**DOSOA TRANSITION (RACER8.DOSOA):** From over MCI VORTAC on MCI R-190 to DOSOA.

**SPRINGFIELD TRANSITION (RACER8.SGF):** From over MCI VORTAC on MCI R-164 and BUM R-342 to BUM VORTAC, then on BUM R-128 and SGF R-311 to SGF VORTAC.

# RACER EIGHT DEPARTURE

(RACER8.MCI) 05OCT23

KANSAS CITY, MISSOURI  
KANSAS CITY INTL (MCI)

NC-3, 13 JUN 2024 to 11 JUL 2024

NC-3, 13 JUN 2024 to 11 JUL 2024