

APP CRS	Rwy Idg	9500
191°	TDZE	995
	Apt Elev	1027


RNAV (RNP) Z RWY 19L

KANSAS CITY INTL (MCI)

RNP AR APCH - GPS.

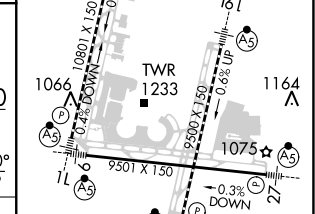
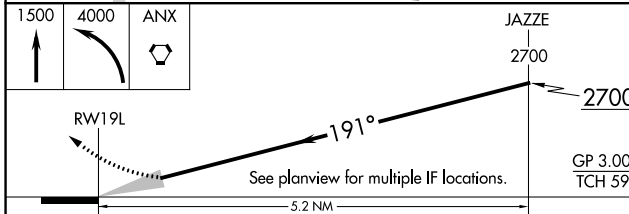
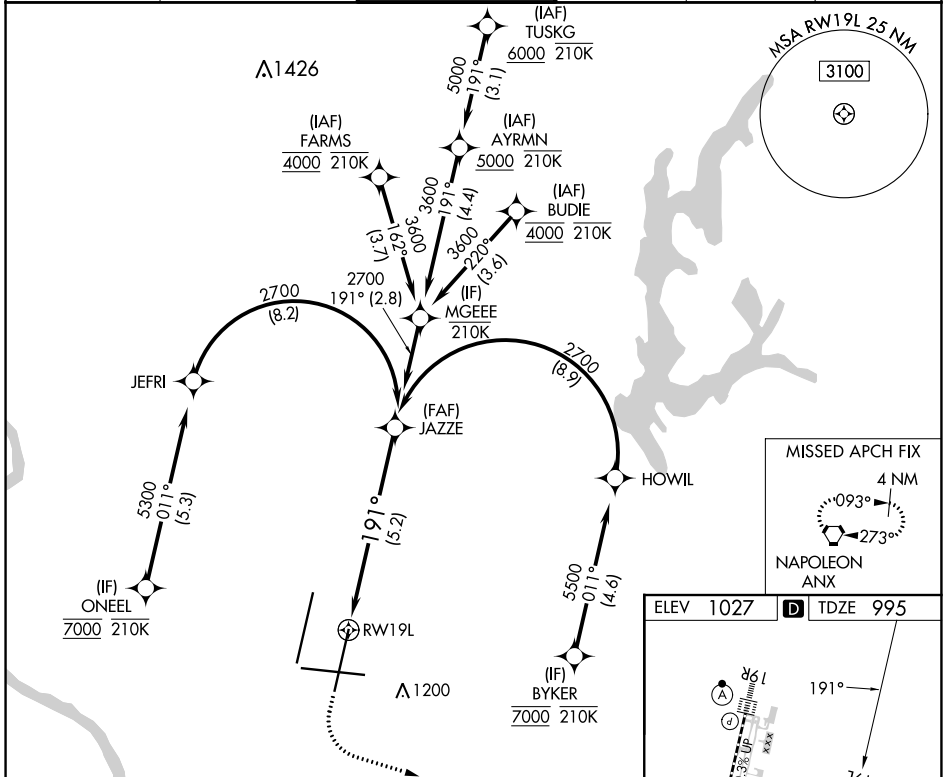
▼ Use of FD or AP required during simultaneous operations. For uncompensated Baro-VNAV systems, procedure NA below -21°C or above 54°C. Simultaneous approach authorized, except for arrivals at ONEEL, BYKER, FARMS and BUDIE. For inop ALS, increase RNP 0.20 all Cats visibility to RVR 4500 and RNP 0.30 all Cats visibility to RVR 5500.

MALSR



MISSED APPROACH: Climb to 1500 then climbing left turn to 4000 direct ANX VORTAC and hold.

D-ATIS	KANSAS CITY APP CON	INTERNATIONAL TOWER	GND CON	CLNC DEL	CPDLC
128.375	120.95 318.1	128.2 254.25	121.8	135.7	



1500	4000	ANX	JAZZE
↑	↷	⬡	2700
RWY 19L		See planview for multiple IF locations.	
CATEGORY	A	B	C
RNP 0.20 DA		1310/24	315 (300-½)
RNP 0.30 DA		1365/35	370 (400-¾)

AUTHORIZATION REQUIRED

HIRL all Rwws
TDZ/CL Rwws 1L, 1R, 19R and 19L

NC-3, 13 JUN 2024 to 11 JUL 2024

NC-3, 13 JUN 2024 to 11 JUL 2024