

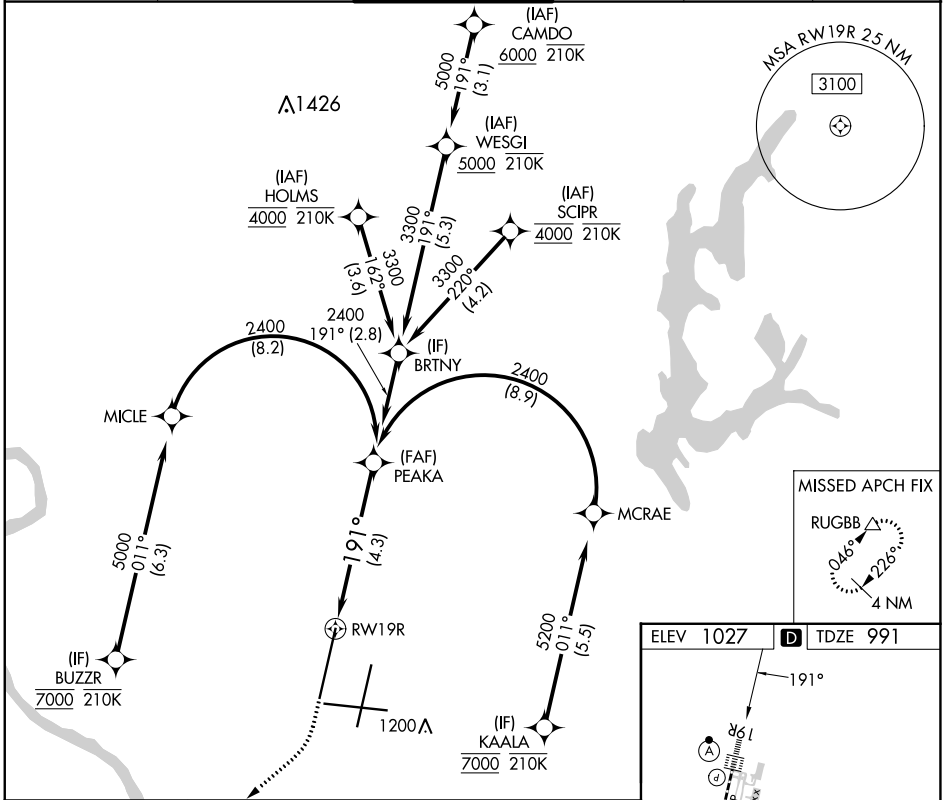
RNAV (RNP) Z RWY 19R

KANSAS CITY INTL (MCI)

APP CRS	Rwy Idg	10801
191°	TDZE	991
	Apt Elev	1027

RADAR required for procedure entry. RNP AR APCH - GPS.		ALSF-2 	MISSED APPROACH: Climb to 2000 then climbing right turn to 4000 direct RUGBB and hold.
▼ For uncompensated Baro-VNAV systems, procedure NA below -21°C or above 54°C. Simultaneous approach authorized, except for arrivals at BUZZR, HOLMS, SCIPR, and KAALA. For inop ALS, increase RNP 0.15 all Cats visibility to RVR 4500 and RNP 0.30 all Cats visibility RVR 6000.			

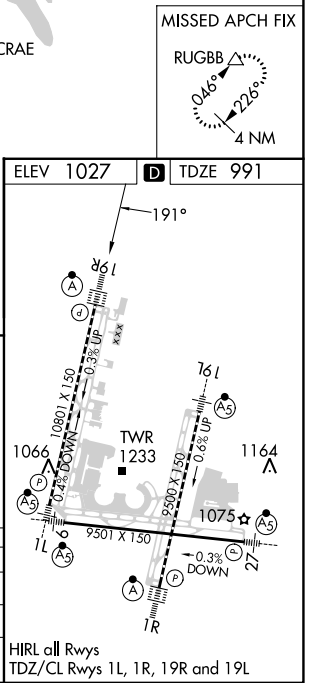
D-ATIS 128.375	KANSAS CITY APP CON 120.95 318.1	INTERNATIONAL TOWER 128.2 254.25	GND CON 121.8	CLNC DEL 135.7	CPDLC
--------------------------	--	--	-------------------------	--------------------------	-------



NC-3, 13 JUN 2024 to 11 JUL 2024

NC-3, 13 JUN 2024 to 11 JUL 2024

2000	4000	RUGBB	See planview for multiple IF locations. VGSI and RNAV glidepath not coincident (VGSI Angle 3.00/TCH 80).	PEAKA
				2400
RWY 19R		GP 3.00°		TCH 55
4.3 NM				
CATEGORY	A	B	C	D
RNP 0.15 DA		1287/24	296 (300-1/2)	
RNP 0.30 DA		1405/40	414 (400-3/4)	
AUTHORIZATION REQUIRED				



HIRL all Rwy's
TDZ/CL Rwy's 1L, 1R, 19R and 19L