

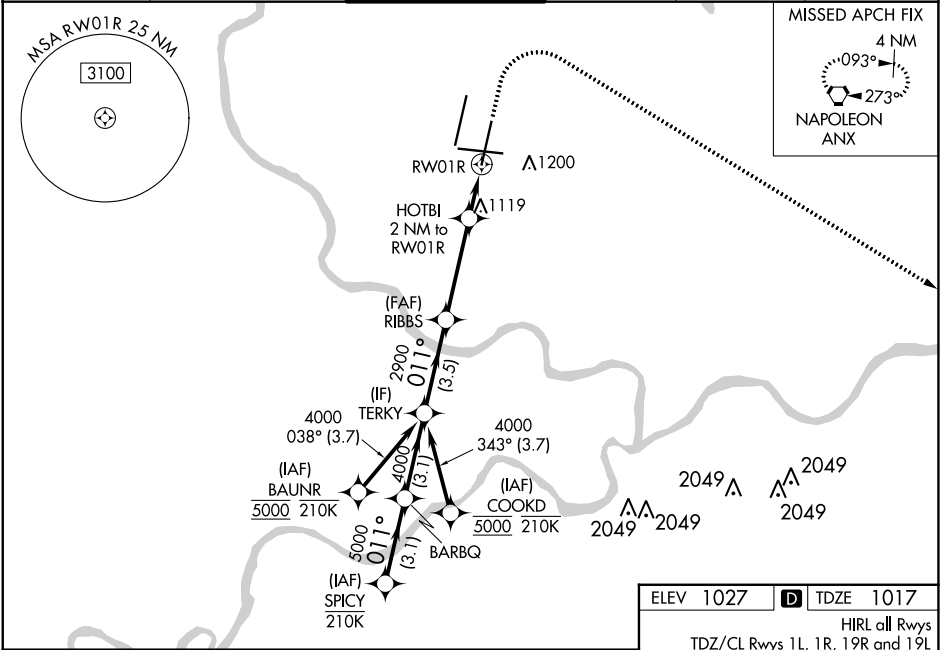
WAAS CH 58208 W01A	APP CRS 011°	Rwy Idg 9500 TDZE 1017 Apt Elev 1027
---------------------------------	------------------------	---

RNAV (GPS) Y RWY 1R

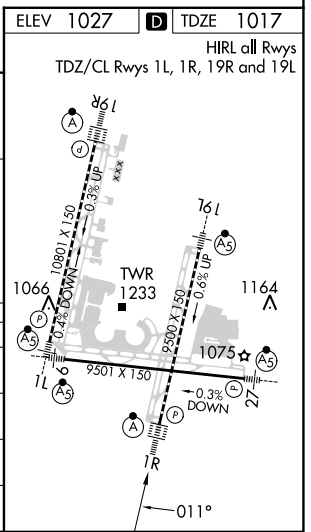
KANSAS CITY INTL (MCI)

RNP APCH - GPS.	ALSF-2 	MISSED APPROACH: Climb to 1500 then climbing right turn to 4000 direct ANX VORTAC and hold.
-----------------	------------	---

D-ATIS 128.375	KANSAS CITY APP CON 120.95 318.1	INTERNATIONAL TOWER 128.2 254.25	GND CON 121.8	CLNC DEL 135.7	CPDLC
--------------------------	--	--	-------------------------	--------------------------	-------



SPICY	BARBQ	TERKY	RIBBS	HOTBI 2 NM to RWY 1R	1500	4000	ANX
6000	5000	4000	2900	1700	↑	↘	
GP 3.00° TCH 59	VGSI and RNAV glidepath not coincident (VGSI Angle 3.00/TCH 74).						
	3.1 NM	3.1 NM	3.5 NM	3.7 NM	1.1 NM	0.9 NM	
CATEGORY	A		B	C	D		
LPV DA	1217/18		200 (200-½)				
LNAV/VNAV DA	1311/24		294 (300-½)				
LNAV MDA	1380/24	363 (400-½)	1380/35	363 (400-5%)			
CIRCLING	1540-1	513 (600-1)	1540-1½ 513 (600-1½)	1580-2 553 (600-2)			



NC-3, 13 JUN 2024 to 11 JUL 2024

NC-3, 13 JUN 2024 to 11 JUL 2024