

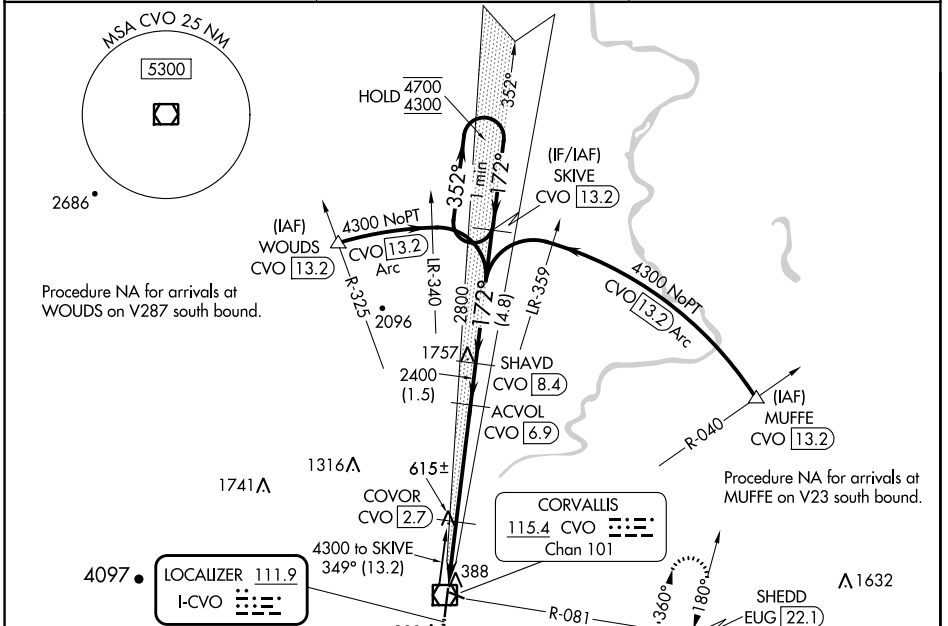
LOC I-CVO	APP CRS	Rwy Idg	5900
111.9	172°	TDZE	248
		Apt Elev	250

ILS or LOC RWY 17

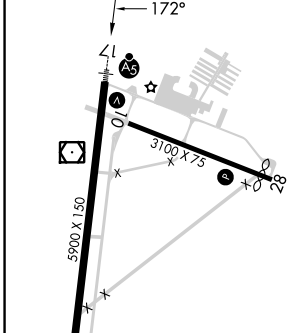
CORVALLIS MUNI (CVO)

DME required.	MALSR	MISSED APPROACH: Climb to 900 then climbing left turn to 3000 on heading 050° and on CVO VOR/DME R-081 to SHEDD INT/EUG 22.1 DME and hold, continue climb-in-hold to 3000.
<p>⚠ Circling Rwy 28 NA at night. For inop ALS, increase S-LOC 17 Cat C/D visibility to 1¼ SM. DME from CVO VOR/DME. DME use requires simultaneous reception of I-CVO and CVO DME.</p>		

AWOS-3PT 135.775	CASCADE APP CON ★ 127.5 348.7	UNICOM 123.075 (CTAF) ①
----------------------------	---	-----------------------------------



ELEV 250	D TDZE 248
----------	-------------------



900	3000	SHEDD	SKIVE	One Minute Holding Pattern
↑	hdg 050°	CVO R-081	SHAYVD CVO 8.4	
		COVER CVO 2.7	ACVOL CVO 6.9	
		CVO 2.1	2400	
		CVO 0.3	2800	
		1060	2400	
		1.8 NM	0.6	4.2 NM
		1.5 NM	4.8 NM	

REIL Rwy 35	HIRL 17-35	MIRL Rwys 10-28				
FAF to MAP 6.6 NM						
Knots	60	90	120	150	180	
Min:Sec	6:36	4:24	3:18	2:38	2:14	
CIRCLING	880-1	630 (700-1)	920-1¾	1060-2½	670 (700-1¾)	810 (900-2½)

NW-1, 13 JUN 2024 to 11 JUL 2024

NW-1, 13 JUN 2024 to 11 JUL 2024