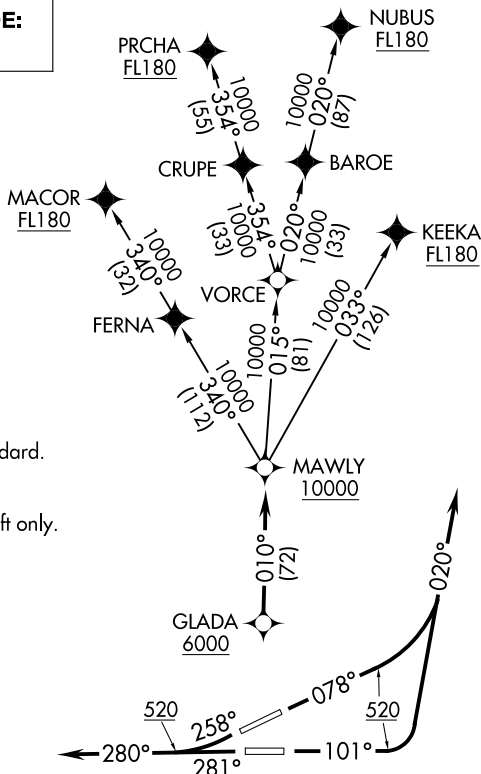


# GLADA THREE DEPARTURE (RNAV) AL-784 (FAA)

D-ATIS 125.8  
 CLNC DEL 126.4 284.6  
 CPDLC  
 SAN JUAN TOWER 132.05 257.8  
 GND CON 121.9 348.6  
 SAN JUAN DEP CON 119.4 269.2 (West & SW)  
 120.9 290.2 (North & East)

**TOP ALTITUDE:  
5000**



**TAKE-OFF MINIMUMS**  
 Rwy's 8, 10, 26, 28: Standard.

- NOTE: GPS required.
- NOTE: For Turbojet aircraft only.
- NOTE: RNAV 1.
- NOTE: RADAR required.

NOTE: Chart not to scale.

## DEPARTURE ROUTE DESCRIPTION

- TAKEOFF RUNWAY 8:** Climb heading 078° to 520, then climbing left turn heading 020° or as assigned by ATC, expect vectors to GLADA, then via 010° track to MAWLY. Thence. . . .
- TAKEOFF RUNWAY 10:** Climb heading 101° to 520, then climbing left turn heading 020° or as assigned by ATC, expect vectors to GLADA, then via 010° track to MAWLY. Thence. . . .
- TAKEOFF RUNWAY 26:** Climb heading 258° to 520, continue climb heading 280° or as assigned by ATC, expect vectors to GLADA, then via 010° track to MAWLY. Thence. . . .
- TAKEOFF RUNWAY 28:** Climb heading 281° to 520, continue climb heading 280° or as assigned by ATC, expect vectors to GLADA, then via 010° track to MAWLY. Thence. . . .

. . . .via assigned transition. Maintain 5000 unless assigned lower altitude. Expect clearance to FL200, or requested altitude if lower, ten minutes after departure.

- KEEKA TRANSITION (GLADA3.KEEKA)
- MACOR TRANSITION (GLADA3.MACOR)
- NUBUS TRANSITION (GLADA3.NUBUS)
- PRCHA TRANSITION (GLADA3.PRCHA)

SE-3. 13 JUN 2024 to 11 JUL 2024

SE-3. 13 JUN 2024 to 11 JUL 2024