

APP CRS	Rwy ldg	<b>8016</b>
<b>281°</b>	TDZE	<b>10</b>
	Apt Elev	<b>10</b>

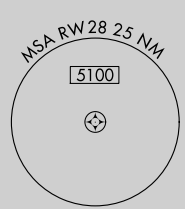
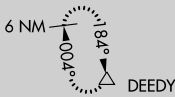
# RNAV (GPS) RWY 28

LUIS MUNOZ MARIN INTL (SJU)(TJSJ)

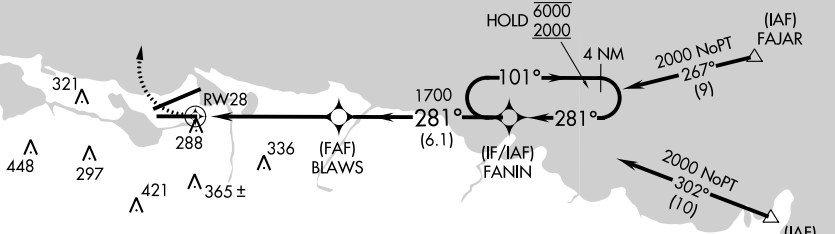
RNP APCH.  
 Rwy 28 helicopter visibility reduction below 3/4 SM NA.

MISSED APPROACH: Climbing right turn to 3000 direct DEEDY and hold.

D-ATIS	SAN JUAN APP CON (WEST & SW) (NORTH & EAST)	SAN JUAN TOWER	GND CON	CLNC DEL	CPDLC
<b>125.8</b>	<b>119.4 269.2 120.9 290.2</b>	<b>132.05 257.8</b>	<b>121.9 348.6</b>	<b>126.4 284.6</b>	



Procedure NA for arrivals at FAJAR on RTE2 eastbound.



Procedure NA for arrivals at CHAKA on RTE6 southeast bound.

ELEV 10	<b>D</b>	TDZE 10
---------	----------	---------

REIL Rwy 26  
 HIRL Rwy 8-26 and 10-28

	4 NM Holding Pattern			
	FANIN			
BLAWS		101° → 6000 ← 281° 2000		
RWY 28		1700		
5.1 NM		6.1 NM		
CATEGORY	A	B	C	D
LNAV MDA	540-1	530 (600-1)	540-1½	530 (600-1½)
CIRCLING	600-1	590 (600-1)	740-2 730 (800-2)	920-3 910 (1000-3)

SE-3, 13 JUN 2024 to 11 JUL 2024

SE-3, 13 JUN 2024 to 11 JUL 2024