

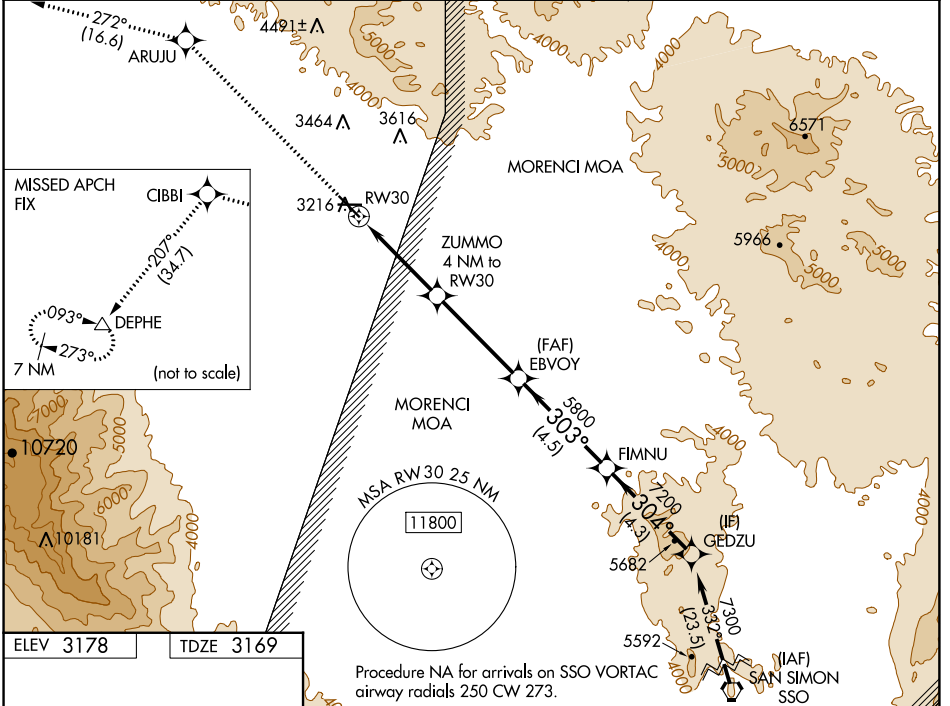
WAAS CH <b>78316</b> <b>W30A</b>	APP CRS <b>303°</b>	Rwy Idg TDZE Apt Elev	<b>6007</b> <b>3169</b> <b>3178</b>
--	------------------------	-----------------------------	---

# RNAV (GPS) RWY 30

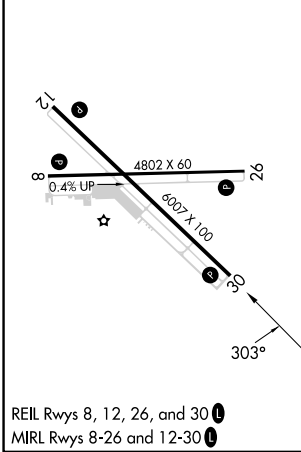
SAFFORD RGNL/1LT DUANE SPALSBURY FLD (SAD)

RNP APCH - GPS.	MISSED APPROACH: Climb to 10000 direct ARUJU and on track 272° to CIBBI and on track 207° to DEPHE and hold.
<p><b>▽</b> Circling to Rwy 8 NA at night. Circling NA northeast of Rwy 12 and north of Rwy 26. For uncompensated Baro-VNAV systems, LNAV/VNAV NA below -6°C or above 54°C.</p> <p><b>△</b></p>	

ASOS <b>124.175</b>	ALBUQUERQUE CENTER <b>134.45 327.15</b>	UNICOM <b>122.8 (CTAF) 0</b>
------------------------	--	---------------------------------



ELEV 3178	TDZE 3169
-----------	-----------



10000	ARUJU	tr 272°	CIBBI	tr 207°	DEPHE	FIMNU	GEDZU
						7200	7300
			ZUMMO 4 NM to RW30	EBVOY 5800			
			1.2 NM to RW30	4480	303°	304°	GP 3.00° TCH 40
			1.2 NM	2.8 NM	4.1 NM	4.5 NM	4.3 NM

CATEGORY	A	B	C	D
LPV DA	3419-3/4 250 (300-3/4)			
LNAV/VNAV DA	3517-1 348 (400-1)			
LNAV MDA	3600-1	431 (500-1)	3600-1 1/4	431 (500-1 1/4)
CIRCLING	3600-1 422 (500-1)	3640-1 462 (500-1)	3640-1 1/2 462 (500-1 1/2)	3900-2 1/4 722 (800-2 1/4)

SW-4, 13 JUN 2024 to 11 JUL 2024

SW-4, 13 JUN 2024 to 11 JUL 2024