

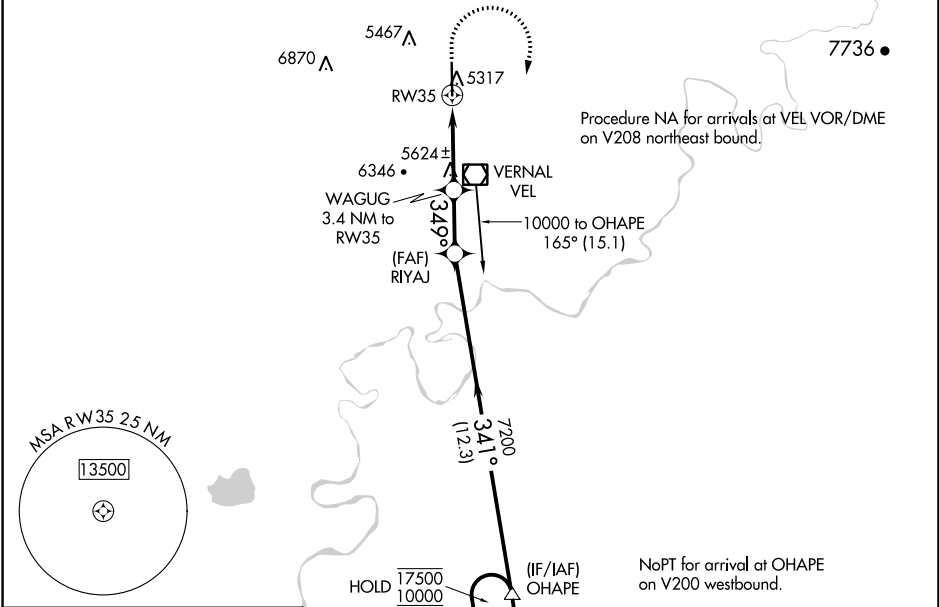
RNAV (GPS) Y RWY 35

VERNAL RGNL (VEL)

APP CRS	Rwy Idg	7000
349°	TDZE	5274
	Apt Elev	5274

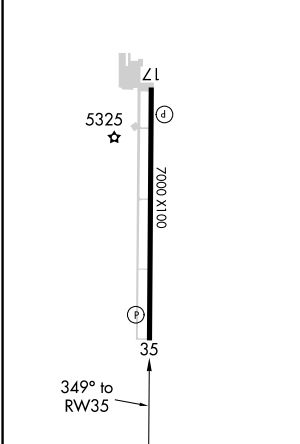
RNP APCH.	MISSED APPROACH: Climb to 7000 then climbing right turn to 10000 direct OHAPE and hold. *Missed approach requires minimum climb of 300 feet per NM to 7500.
⚠ Circling NA west of Rwy 17-35. Rwy 35 helicopter visibility reduction below 3/4 NA.	

ASOS 118.125	SALT LAKE CENTER 119.95 377.15	UNICOM 122.7 (CTAF)
------------------------	--	-------------------------------

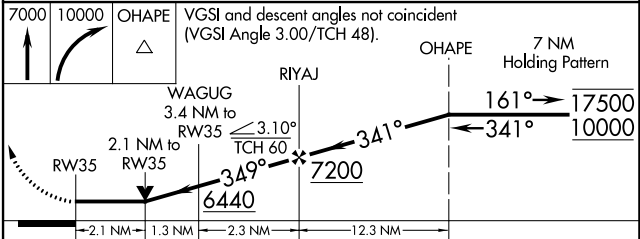


ELEV 5274	D TDZE 5274
-----------	--------------------

REIL Rwy 17 and 35 **Ⓛ**
MIRL Rwy 17-35 **Ⓛ**



7000	10000	OHAPE	VGSI and descent angles not coincident (VGSI Angle 3.00/TCH 48).
			OHAPE 7 NM Holding Pattern



CATEGORY	A	B	C	D
LNAV MDA*	5980-1	706 (800-1)	5980-2	706 (800-2)
LNAV MDA	6380-1½ 1106 (1200-1¼)	6380-1½ 1106 (1200-1½)	6380-3	1106 (1200-3)
C CIRCLING	6380-1¼ 1106 (1200-1¼)	6380-1½ 1106 (1200-1½)	6380-3	6400-3 1126 (1200-3)

RNAV (GPS) Y RWY 35

SW-4, 13 JUN 2024 to 11 JUL 2024

SW-4, 13 JUN 2024 to 11 JUL 2024