

WAAS CH <b>90241</b> <b>W35A</b>	APP CRS <b>349°</b>	Rwy Idg TDZE Apt Elev	<b>7000</b> <b>5274</b> <b>5274</b>
--	------------------------	-----------------------------	---

# RNAV (GPS) Z RWY 35

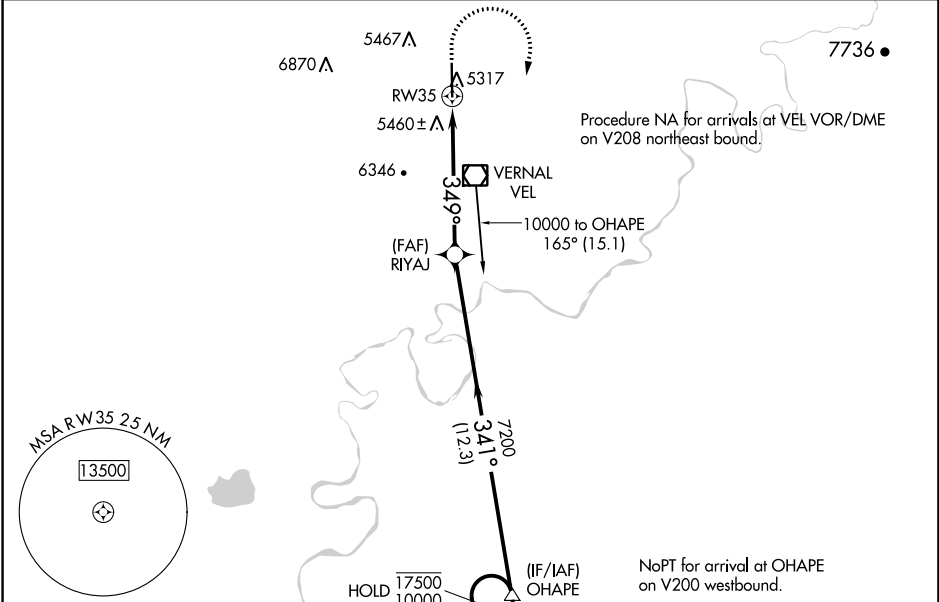
VERNAL RGNL (VEL)

RNP APCH.

**⚠** Rwy 35 helicopter visibility reduction below 3/4 SM NA.  
**⚠** For uncompensated Baro-VNAV systems, procedure NA below -21°C or above 54°C.

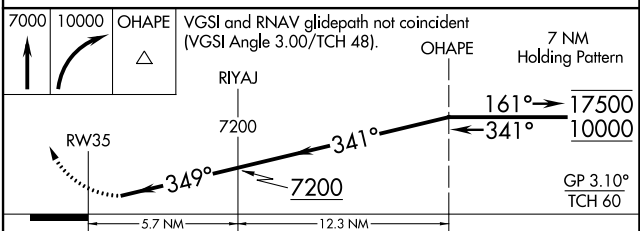
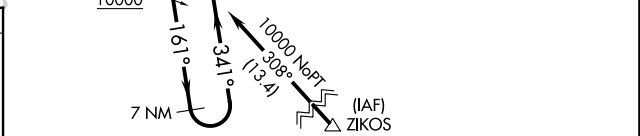
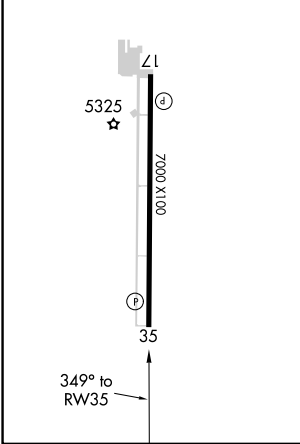
**MISSED APPROACH:** Climb to 7000 then climbing right turn to 10000 direct OHAPE and hold.  
 \*Missed approach requires minimum climb of 290 feet per NM to 8600.

<b>ASOS</b> <b>118.125</b>	<b>SALT LAKE CENTER</b> <b>119.95 377.15</b>	<b>UNICOM</b> <b>122.7 (CTAF)</b>
-------------------------------	---	--------------------------------------



ELEV <b>5274</b>	<b>D</b>	TDZE <b>5274</b>
------------------	----------	------------------

REIL Rws 17 and 35  
 MIRL Rwy 17-35



CATEGORY	A	B	C	D
LPV DA*	5610-1 336 (400-1)			
LPV DA	6175-2½ 901 (1000-2½)			
LNAV/VNAV DA*	5786-1¾ 512 (600-1¾)			
LNAV/VNAV DA	6093-2½ 819 (900-2½)			

SW-4, 13 JUN 2024 to 11 JUL 2024

SW-4, 13 JUN 2024 to 11 JUL 2024