

WAAS CH 86410 W30A	APP CRS 300°	Rwy Idg TDZE Apt Elev	6000 549 549
--	------------------------	-----------------------------	---

RNAV (GPS) RWY 30

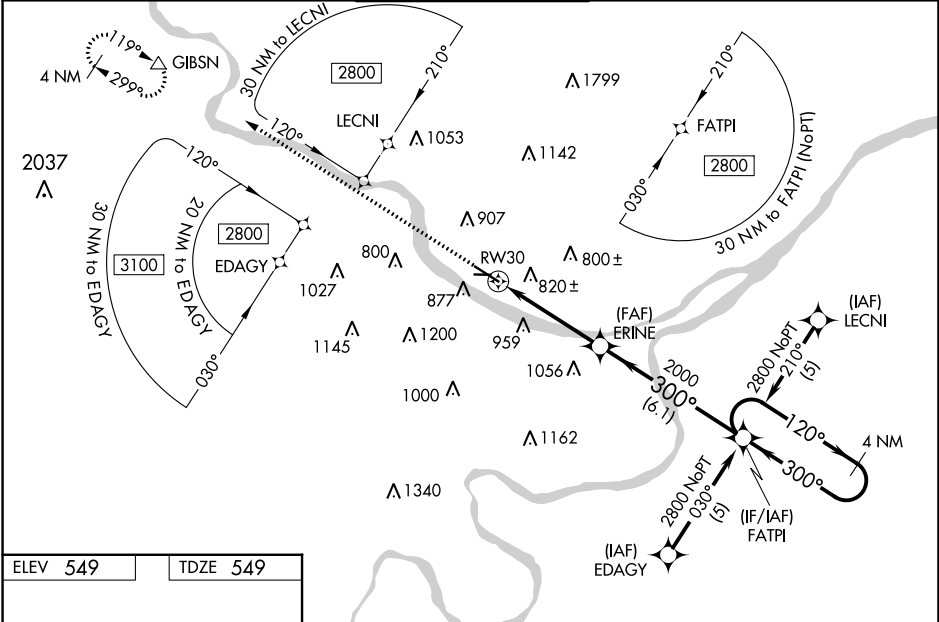
JEFFERSON CITY MEML (JEF)

▼ For uncompensated Baro-VNAV systems, LNAV/VNAV NA below -16°C (4°F) or above 47°C (116°F). DME/DME RNP-0.3 NA.
 ▲ When local altimeter setting not received, use Columbia Rgnl altimeter setting and increase all DA/MDA 80 feet; increase LPV all Cats, LNAV/VNAV all Cats, LNAV Cats B, C, and D, and Circling Cats A, B and C visibility ¼ SM. For inoperative MALS, when using Columbia Rgnl altimeter setting increase LPV all Cats visibility to 1¼. Baro-VNAV and VDP NA when using Columbia Rgnl altimeter setting. Circling Rwy 9 NA at night.

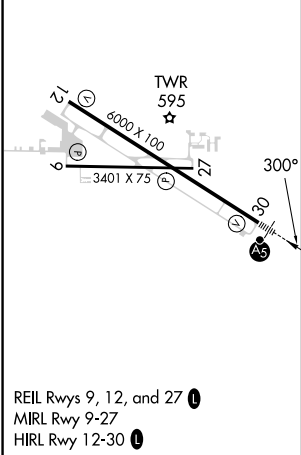


MISSED APPROACH: Climb to 3000 direct GIBSN and hold.

ASOS 133.625	MIZU APP CON 124.375 353.925	JEFFERSON CITY TOWER ★ 125.6 (CTAF) ①	GND CON 121.7	UNICOM 122.95
------------------------	--	---	-------------------------	-------------------------



ELEV 549	TDZE 549
-----------------	-----------------



3000	GIBSN	VGSI and RNAV glidepath not coincident (VGSI Angle 3.00/TCH 50).	4 NM Holding Pattern
TWR 595	ERINE	FATPI	2800
*LNAV only.	* 2 NM to RW30		GP 3.00° TCH 54
	2 NM	2.3 NM	6.1 NM

CATEGORY	A	B	C	D
LPV DA	799-½		250 (300-½)	
LNAV/VNAV DA	1322-2¼		773 (800-2¼)	
LNAV MDA	1240-½	691 (700-½)	1240-1½	1240-1¾
			691 (700-1½)	691 (700-1¾)
① CIRCLING	1320-1	1320-1¼	1320-2¼	1560-3
	771 (800-1)	771 (800-1¼)	771 (800-2¼)	1011 (1100-3)

NC-3, 13 JUN 2024 to 11 JUL 2024

NC-3, 13 JUN 2024 to 11 JUL 2024