

WAAS CH 40228 W16A	APP CRS 162°	Rwy Idg TDZE Apf Elev	7000 4202 4252
--	------------------------	-----------------------------	---

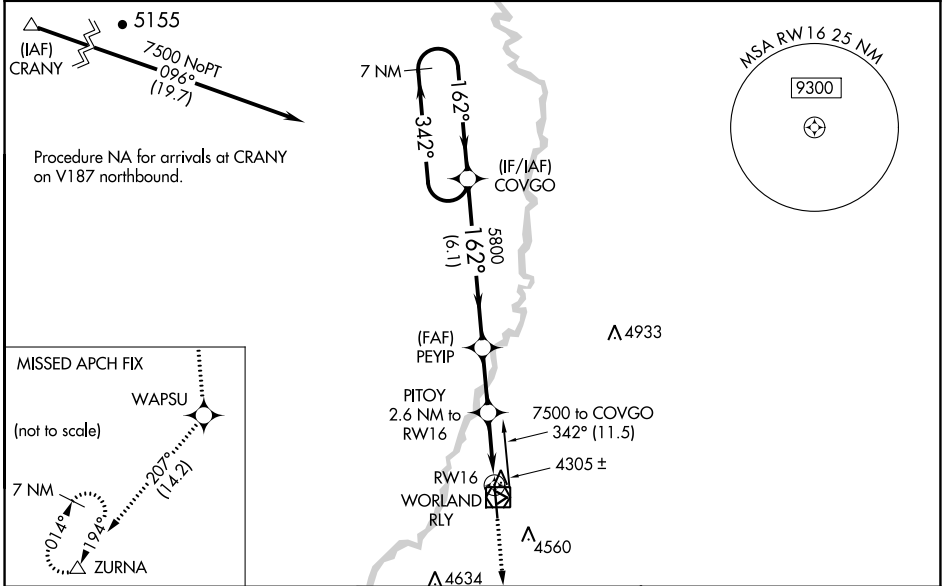
RNAV (GPS) RWY 16

WORLAND MUNI (WRL)

⚠ For uncompensated Baro-VNAV systems, LNAV/VNAV NA below -32°C (-25°F) or above 17°C (62°F). DME/DME RNP-0.3 NA. VDP and Baro-VNAV NA with Greybull altimeter setting. When local altimeter setting not received, use Greybull altimeter setting: increase LPV DA to 4574 feet, LNAV/VNAV DA to 4616 feet, and all MDA's 140 feet; increase LPV, LNAV/VNAV and LNAV all Cats, and Circling Cat C/D visibilities ½ SM. Helicopter visibility reduction below ¾ SM NA.

MISSED APPROACH: Climb to 9600 direct WAPSU and on track 207° to ZURNA and hold, continue climb-in-hold to 9600.

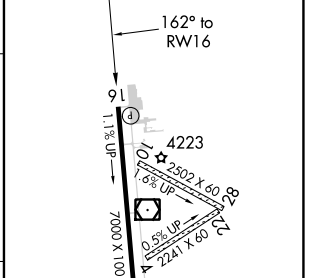
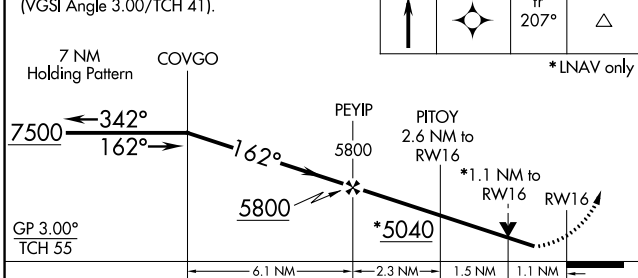
ASOS 135.475	SALT LAKE CENTER 133.25 285.6	UNICOM 123.05 (CTAF) 0
------------------------	---	----------------------------------



NW-1, 13 JUN 2024 to 11 JUL 2024

NW-1, 13 JUN 2024 to 11 JUL 2024

VGSI and RNAV glidepath not coincident (VGSI Angle 3.00/TCH 41).	9600 WAPSU	ZURNA	ELEV 4252	D	TDZE 4202
--	------------	-------	-----------	---	-----------



CATEGORY	A	B	C	D
LPV DA	4452-¾		250 (200-¾)	
LNAV/VNAV DA	4494-⅞		292 (300-⅞)	
LNAV MDA	4560-1 358 (400-1)		4560-1½ 358 (400-1½)	
CIRCLING	4920-1 668 (700-1)		4920-1¾ 668 (700-1¾) 5020-2½ 768 (800-2½)	

REIL Rwy 16 and 34
MIRL Rwy 16-34