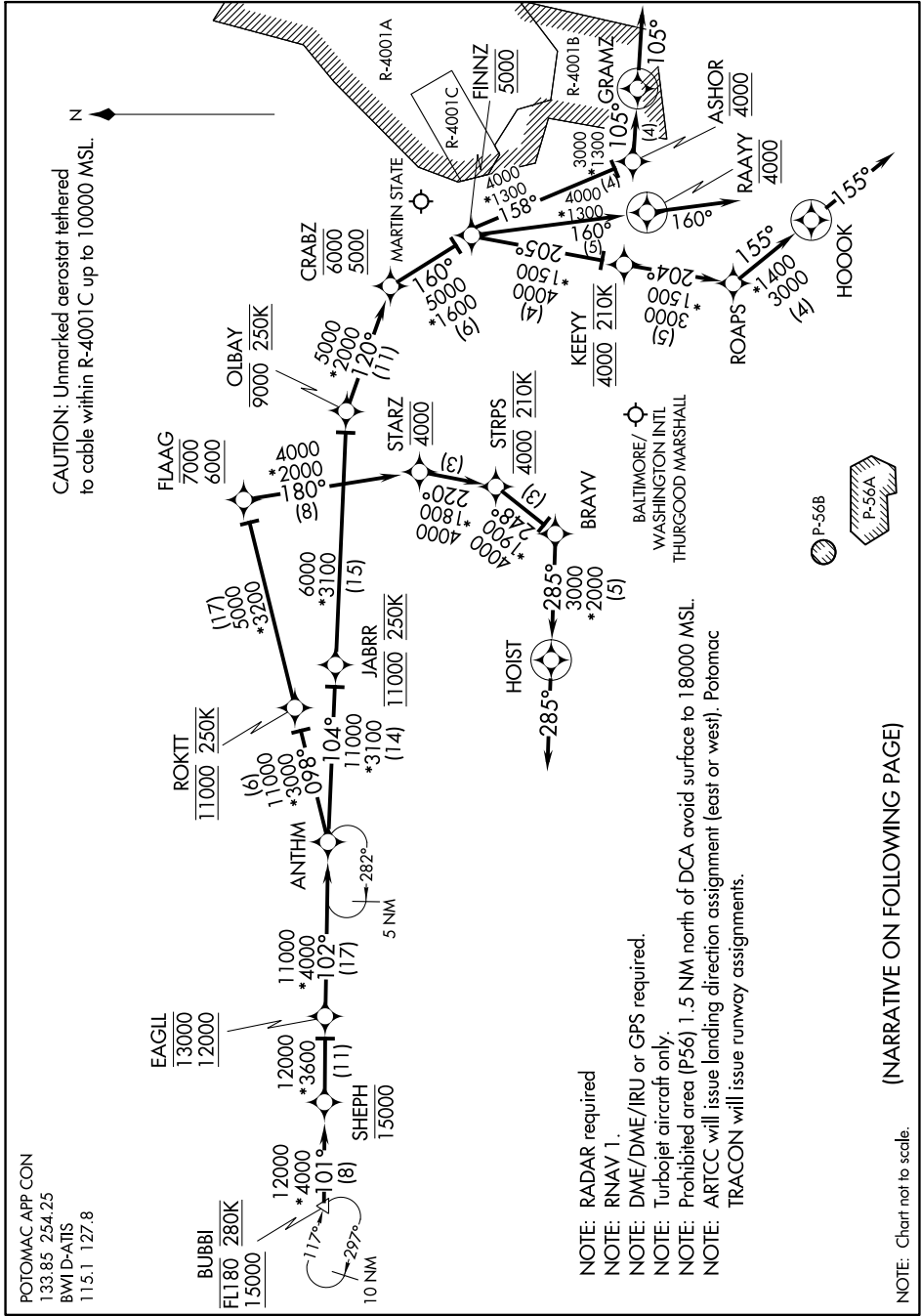


# ANTHM THREE ARRIVAL (RNAV) Arrival Routes

BALTIMORE, MARYLAND

NE-3, 13 JUN 2024 to 11 JUL 2024



POTOMAC APP CON  
 133.85 254.25  
 BWI D-ATS  
 115.1 127.8

BUBBI  
 FL180 280K  
 15000

- NOTE: RADAR required
- NOTE: RNAV 1.
- NOTE: DME/DME/IRU or GPS required.
- NOTE: Turbojet aircraft only.
- NOTE: Prohibited area (P56) 1.5 NM north of DCA avoid surface to 18000 MSL.
- NOTE: ARTCC will issue landing direction assignment (east or west). Potomac TRACON will issue runway assignments.

NOTE: Chart not to scale.

(NARRATIVE ON FOLLOWING PAGE)

NE-3, 13 JUN 2024 to 11 JUL 2024

# ANTHM THREE ARRIVAL (RNAV) Arrival Routes

BALTIMORE, MARYLAND