

# MIIDY TWO ARRIVAL (RNAV)

BALTIMORE, MARYLAND

NE-3, 13 JUN 2024 to 11 JUL 2024

**ARRIVAL ROUTE DESCRIPTION**

**LAFIN TRANSITION (LAFIN.MIIDY2)**

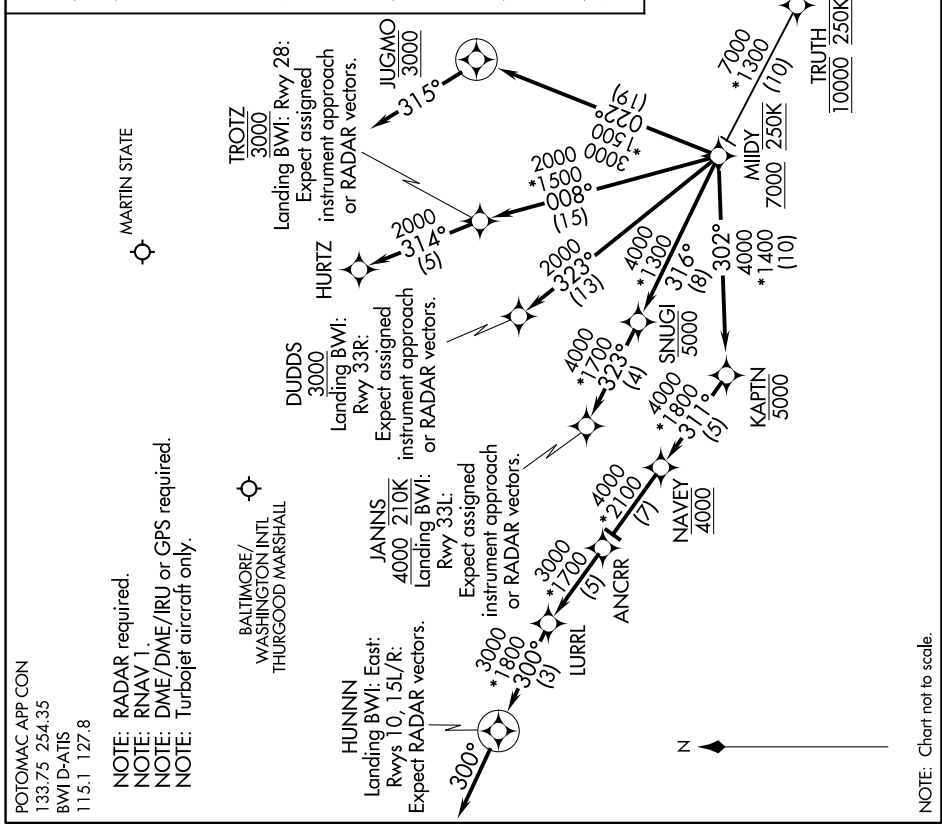
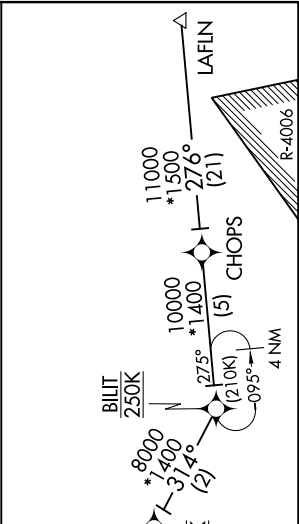
**LANDING KBWI RWYS 10, 15L/R:** From MIIDY on track 302° to cross KAPTIN at or below 5000, then on track 311° to cross NAVY at 4000, then on track 311° to ANCR, then on track 311° to LURRL, then on track 300° to HUNNIN, then on track 300°. Expect RADAR vectors to final approach course.

**LANDING BWI RWY 28:** From MIIDY on track 008° to cross TROTZ at 3000, then on track 314° to HURTZ. Expect assigned instrument approach or RADAR vectors.

**LANDING BWI RWY 33L:** From MIIDY on track 316° to cross SNUGI at or below 5000, then on track 323° to cross JANNIS at or above 4000 and at 210K. Expect assigned instrument approach or RADAR vectors.

**LANDING BWI RWY 33R:** From MIIDY on track 323° to cross DUDDS at or above 3000. Expect assigned instrument approach or RADAR vectors.

**LANDING MTN:** From MIIDY on track 022° to cross JUGMO at 3000, then on heading 315°. Expect RADAR vectors to final approach course.



POTOMAC APP CON  
133.75 254.35  
BWI D-ATIS  
115.1 127.8

**NOTE:** RADAR required.  
**NOTE:** RNAV 1.  
**NOTE:** DME/DME/IRU or GPS required.  
**NOTE:** Turbojet aircraft only.

BALTIMORE/  
WASHINGTON INTL.  
THURGOOD MARSHALL

**HUNNIN**  
Landing BWI: East:  
Rwys 10, 15L/R:  
Expect RADAR vectors.

**JANNIS**  
4000 210K  
Landing BWI:  
Rwy 33L:  
Expect assigned  
instrument approach  
or RADAR vectors.

**DUDDS**  
3000  
Landing BWI:  
Rwy 33R:  
Expect assigned  
instrument approach  
or RADAR vectors.

**HURTZ**  
3000  
Landing BWI: Rwy 28:  
Expect assigned  
instrument approach  
or RADAR vectors.

**TROTZ**  
3000  
Landing BWI: Rwy 28:  
Expect assigned  
instrument approach  
or RADAR vectors.

# MIIDY TWO ARRIVAL (RNAV)

BALTIMORE, MARYLAND

NE-3, 13 JUN 2024 to 11 JUL 2024