

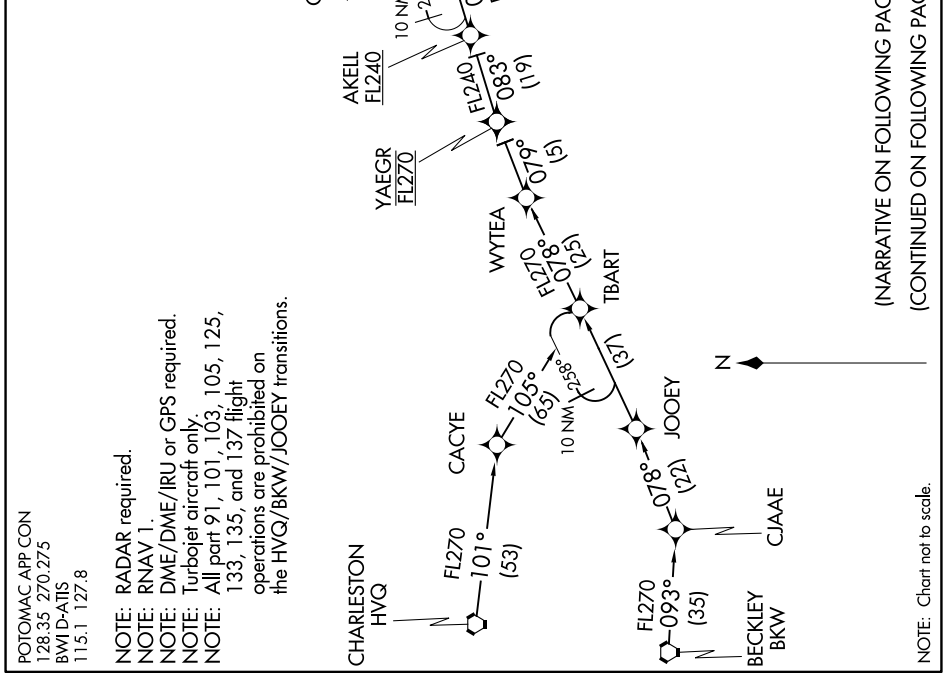
RAVNN SIX ARRIVAL (RNAV) Transition Routes

BALTIMORE, MARYLAND

NE-3, 13 JUN 2024 to 11 JUL 2024

BECKLEY TRANSITION (BKW.RAVNN6)
 CHARLESTON TRANSITION (HVQ.RAVNN6)
 HBUDA TRANSITION (HBUDA.RAVNN6): (ATC assigned only).
 JOOEY TRANSITION (JOOEY.RAVNN6): (ATC assigned only).
 THHMP TRANSITION (THHMP.RAVNN6)

See following page for Arrival Routes.



POTOMAC APP CON
 128.35 270.275
 BWI D-ATIS
 115.1 127.8

NOTE: RADAR required.
 NOTE: RNAV 1.
 NOTE: DME/DME/IRU or GPS required.
 NOTE: Turbojet aircraft only.
 NOTE: All part 91, 101, 103, 105, 125, 133, 135, and 137 flight operations are prohibited on the HVQ/BKW/JOOEY transitions.

(NARRATIVE ON FOLLOWING PAGE)
 (CONTINUED ON FOLLOWING PAGE)

NOTE: Chart not to scale.

NE-3, 13 JUN 2024 to 11 JUL 2024

RAVNN SIX ARRIVAL (RNAV) Transition Routes

BALTIMORE, MARYLAND