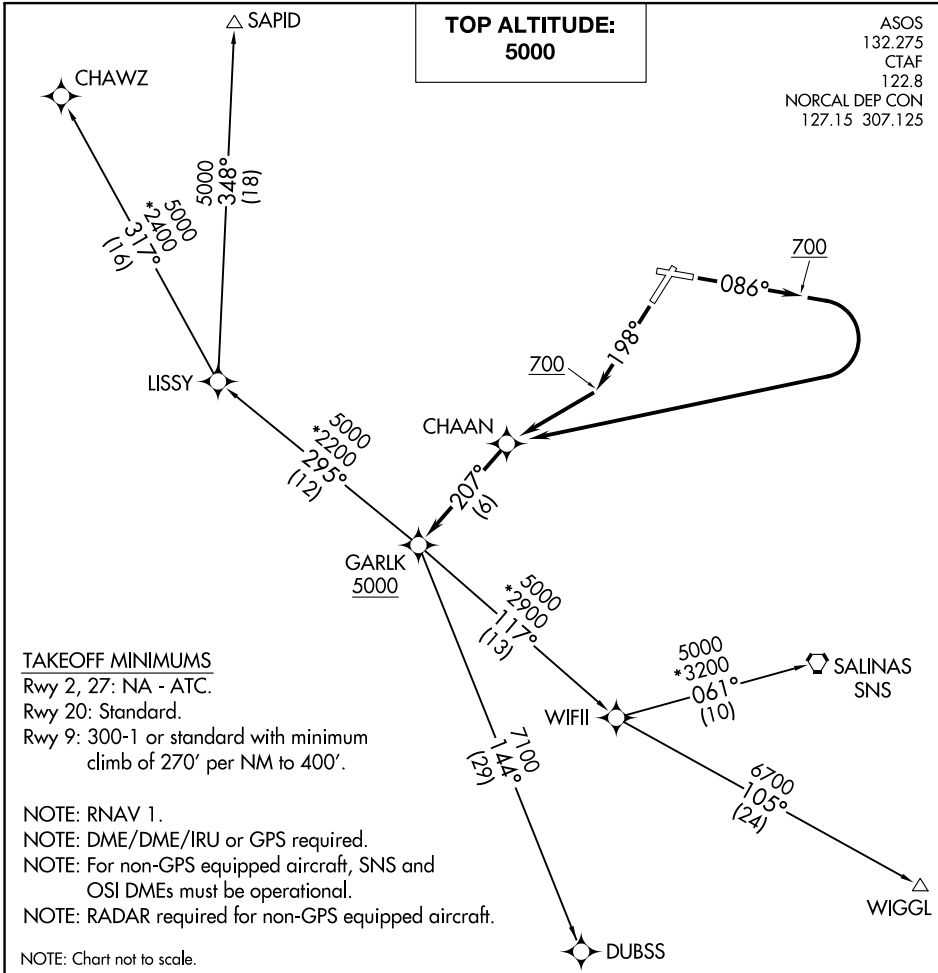


(GARLK1.GARLK) 18256

GARLK ONE DEPARTURE (RNAV)

AL-805 (FAA)

WATSONVILLE MUNI (WVI)
WATSONVILLE, CALIFORNIA



SW-2, 13 JUN 2024 to 11 JUL 2024

SW-2, 13 JUN 2024 to 11 JUL 2024

DEPARTURE ROUTE DESCRIPTION

TAKEOFF RUNWAY 9: Climb heading 086° to 700, then right turn direct CHAAN, thence. . . .

TAKEOFF RUNWAY 20: Climb heading 198° to 700, then direct CHAAN, thence. . . .

. . . . on track 207° to cross GARLK at or above 5000, then on (transition).

CHAWZ TRANSITION (GARLK1.CHAWZ)
DUBSS TRANSITION (GARLK1.DUBSS)
SALINAS TRANSITION (GARLK1.SNS)
SAPID TRANSITION (GARLK1.SAPID)
WIGGL TRANSITION (GARLK1.WIGGL)

GARLK ONE DEPARTURE (RNAV)

(GARLK1.GARLK) 13SEP18

WATSONVILLE, CALIFORNIA
WATSONVILLE MUNI (WVI)