

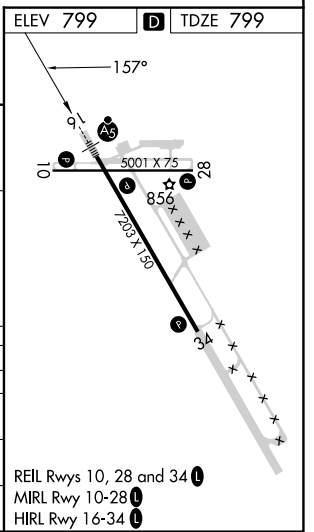
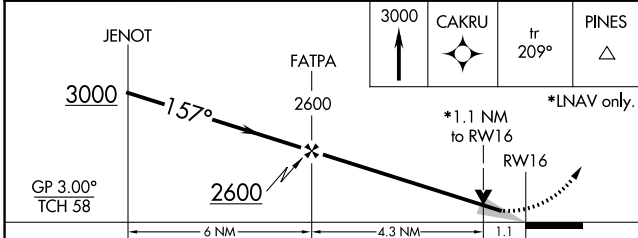
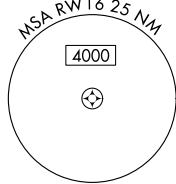
WAAS CH 69215 W16A	APP CRS 157°	Rwy Idg 7203 TDZE 799 Apr Elev 799
--	------------------------	---

RNAV (GPS) RWY 16

CHIPPEWA COUNTY INTL (CIU)

RNP APCH.	MALSR	MISSED APPROACH: Climb to 3000 direct CAKRU and on track 209° to PINES and hold.
For uncompensated Baro-VNAV systems, LNAV/VNAV NA below -16°C or above 54°C. For inop ALS, increase LPV all Cats, LNAV/VNAV all Cats and LNAV Cats A/B/C ½ SM; increase LNAV Cat D ¼ SM.		

AWOS-3PT 127.575	TORONTO CENTER 132.65 344.5	UNICOM 123.0 (CTAF) 1
----------------------------	---------------------------------------	---------------------------------



CATEGORY	A	B	C	D
LPV DA	1068-½		269 (300-½)	
LNAV/VNAV DA	1204-1		405 (500-1)	
LNAV MDA	1220-½ 421 (500-½)		1220-¾ 421 (500-¾)	
CIRCLING	1260-1 461 (500-1)		1260-1½ 461 (500-½)	
			1360-2 561 (600-2)	

REIL Rwy 10, 28 and 34 1
MIRL Rwy 10-28 1
HIRL Rwy 16-34 1

EC-1, 13 JUN 2024 to 11 JUL 2024

EC-1, 13 JUN 2024 to 11 JUL 2024