

RNAV (GPS) RWY 28

CHIPPEWA COUNTY INTL (CIU)

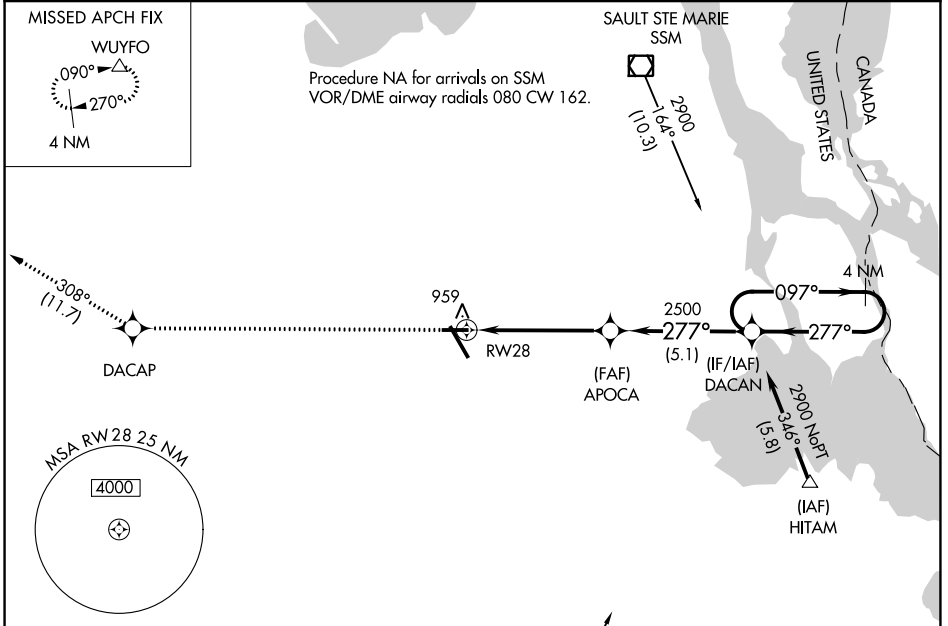
APP CRS 277°	Rwy Idg TDZE Apt Elev	5000 799 799
------------------------	-----------------------------	---

RNP APCH.

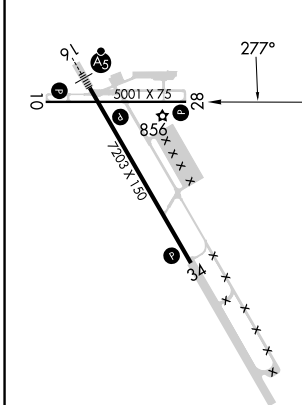
⚠ Rwy 28 helicopter visibility reduction below 1 SM NA. When local altimeter setting not received, use Sault Ste Marie Muni/Sanderson Fld altimeter setting; increase all MDA 60 feet, increase LNAV and Circling visibility Cat C/D ¼ SM. Straight-in and Circling Rwy 28 NA at night.

MISSED APPROACH: Climb to 3000 direct DACAP and track 308° to WUYFO and hold.

AWOS-3PT 127.575	TORONTO CENTER 132.65 344.5	UNICOM 123.0 (CTAF) 0
----------------------------	---------------------------------------	---------------------------------



ELEV 799	D	TDZE 799
----------	----------	----------



3000	DACAP	fr 308°	WUYFO	4 NM Holding Pattern
			APOCA	
			RW28	
			277°	
			2500	
			097°	
			277°	
			2900	
			3.05° TCH 40	
			5.1 NM	
			5.1 NM	

CATEGORY	A	B	C	D
LNAV MDA	1220-1	421 (500-1)	1220-1½	421 (500-1½)
C CIRCLING	1260-1	461 (500-1)	1260-1½ 461 (500-1½)	1360-2 561 (600-2)

REIL Rws 10, 28 and 34

MIRL Rwy 10-28

HIRL Rwy 16-34

EC-1, 13 JUN 2024 to 11 JUL 2024