

WAAS CH 86530 W35B	APP CRS 356°	Rwy Idg TDZE Apt Elev	8301 36 36
--	------------------------	-----------------------------	---------------------------------------

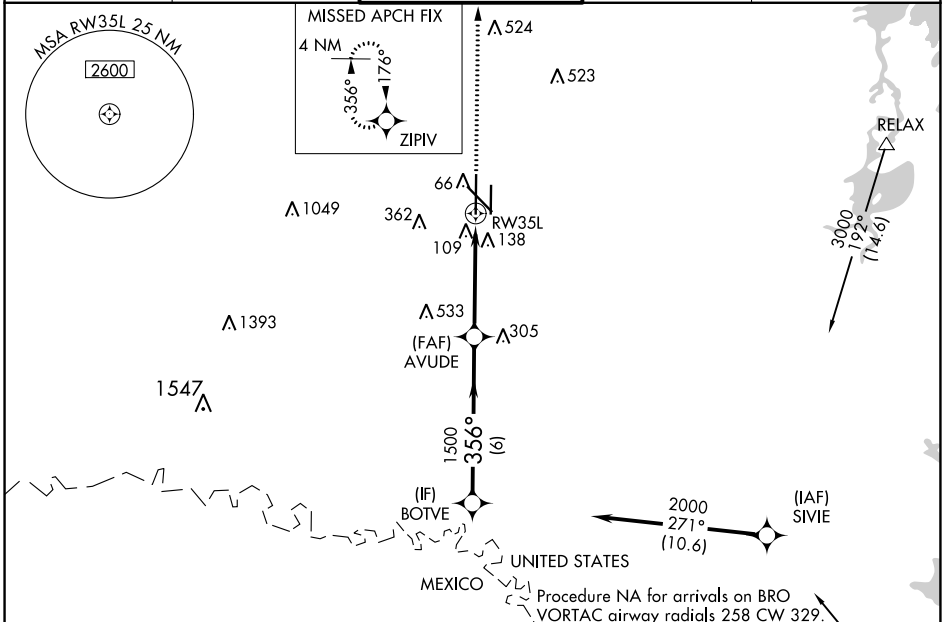
RNAV (GPS) Y RWY 35L

VALLEY INTL (H.R.L.)

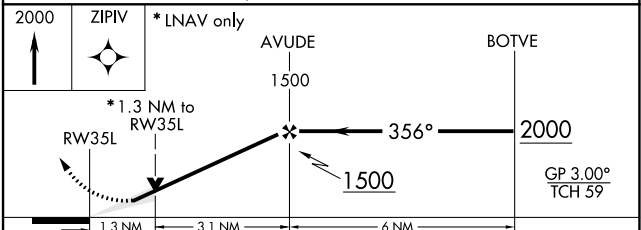
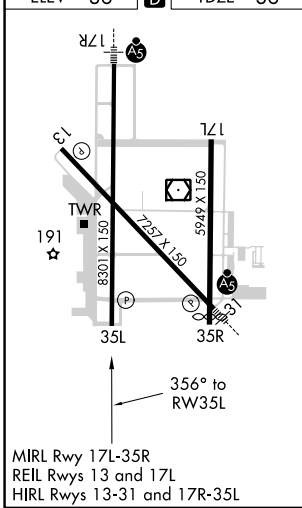
⚠ For uncompensated Baro-VNAV systems, LNAV/VNAV NA below -15°C (5°F) or above 54°C (130°F). DME/DME RNP-0.3 NA. When local altimeter setting not received, use Port Isabel altimeter setting: increase LPV DA to 328 feet and all visibilities 1/8 SM; increase LNAV/VNAV DA to 418 feet and all visibilities 1/8 SM; increase all MDAs 60 feet and visibility Cats C and D 1/4 SM. Baro-VNAV and VDP NA with Port Isabel altimeter setting.

MISSED APPROACH:
Climb to 2000 direct
ZIPIV and hold.

ATIS 124.85	VALLEY APP CON 120.7 279.5	HARLINGEN TOWER ★ 119.3 (CTAF) 317.6	GND CON 121.7	UNICOM 122.95
-----------------------	--------------------------------------	---	-------------------------	-------------------------



ELEV 36	D	TDZE 36
----------------	----------	----------------



CATEGORY	A	B	C	D
LPV DA		286-3/4	250 (300-3/4)	
LNAV/VNAV DA		376-1/8	340 (400-1/8)	
LNAV MDA	500-1	464 (500-1)	500-1 3/8	464 (500-1 3/8)
C CIRCLING	500-1 464 (500-1)	560-1 524 (600-1)	680-1 3/4 644 (700-1 3/4)	680-2 644 (700-2)

SC-3, 13 JUN 2024 to 11 JUL 2024

SC-3, 13 JUN 2024 to 11 JUL 2024