

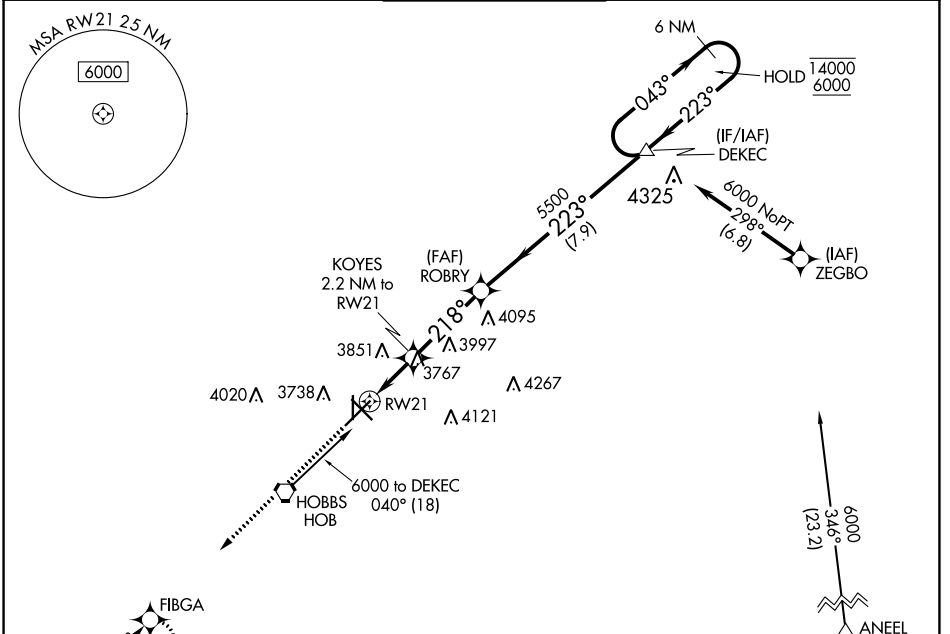
WAAS CH <b>82735</b> <b>W21A</b>	APP CRS <b>218°</b>	Rwy Idg TDZE Apt Elev	<b>7398</b> <b>3649</b> <b>3661</b>
--	------------------------	-----------------------------	---

# RNAV (GPS) RWY 21

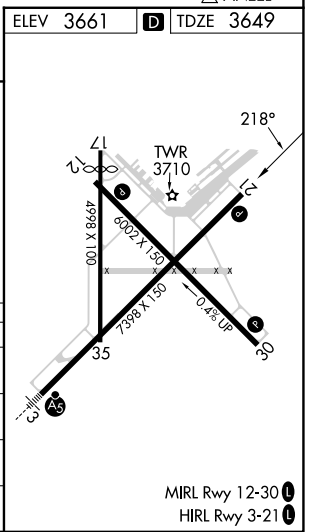
LEA COUNTY RGNL (HOB)

RNP APCH - GPS.	MISSED APPROACH: Climb to 5600 direct FIBGA and hold.
<p>⚠ Circling Rwy 17 NA at night. For uncompensated Baro-VNAV systems, LNAV/VNAV NA below -22°C or above 54°C.</p>	

ATIS <b>119.75</b>	FORT WORTH CENTER <b>133.1 298.95</b>	HOBBBS TOWER ★ <b>120.65 (CTAF) 317.4</b>	GND CON <b>121.9</b>	UNICOM <b>122.95</b>
-----------------------	--	--	-------------------------	-------------------------



ELEV 5600	FIBGA	ROBYR	DEKEC	6 NM Holding Pattern
↑	⬠	5500	5500	14000 6000
1 NM to RWY 21	KOYES 2.2 NM to RWY 21	218°	223°	043°
4400	5500	5500	5500	GP 3.00° TCH 44
1 NM	1.2 NM	3.5 NM	7.9 NM	
CATEGORY	A	B	C	D
LPV DA		3899-3/4	250 (300-3/4)	
LNAV/VNAV DA		3899-3/4	250 (300-3/4)	
LNAV MDA		4020-1	371 (400-1)	
Ⓢ CIRCLING	4120-1 459 (500-1)	4160-1 499 (500-1)	4440-2 1/4 779 (800-2 1/4)	4440-2 1/2 779 (800-2 1/2)



SW-1, 13 JUN 2024 to 11 JUL 2024

SW-1, 13 JUN 2024 to 11 JUL 2024