

VOR/DME OTB 109.8 Chan 35	APP CRS 023°	Rwy Idg TDZE Apt Elev N/A N/A 347
--	------------------------	--

COPTER VOR 023°

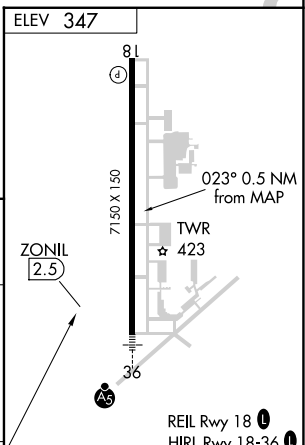
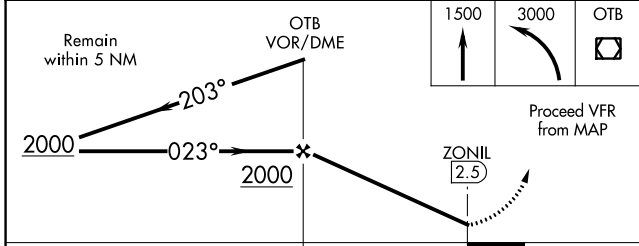
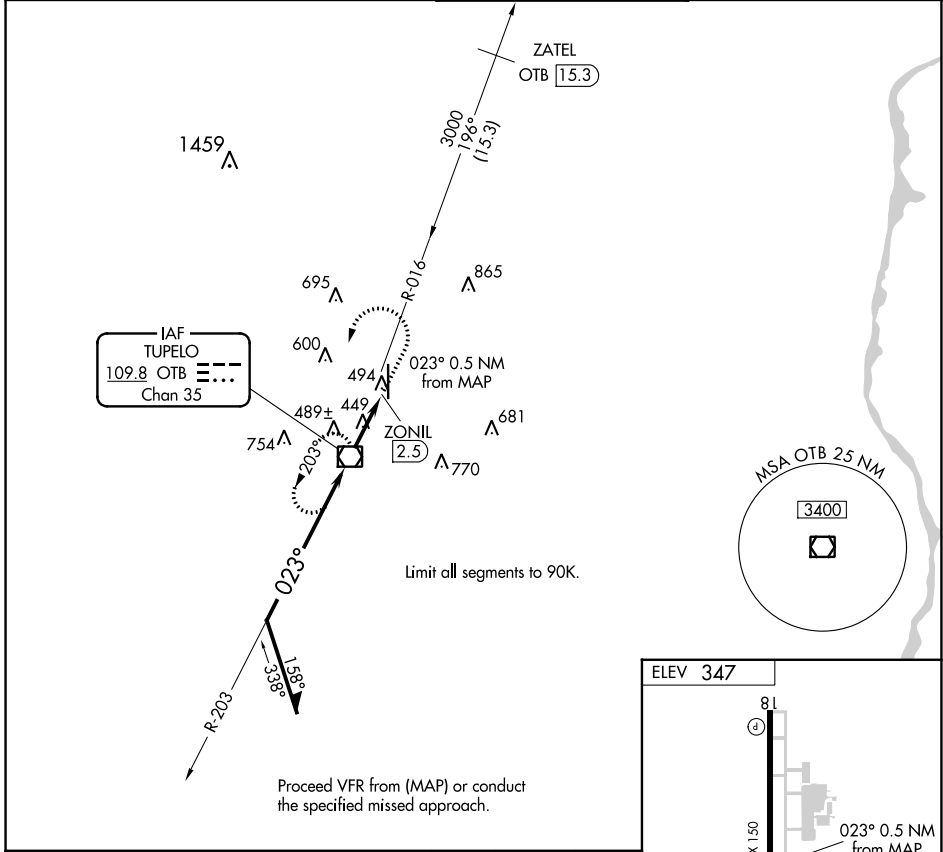
TUPELO RGNL (TUP)

RADAR required for procedure entry. DME required.

When local altimeter setting not received, use Columbus AFB altimeter setting and increase MDA 120 feet.

MISSED APPROACH: Climb to 1500 then climbing left turn 3000 direct OTB VOR/DME and hold.

ASOS 133.525	MEMPHIS CENTER 128.5 279.55	TUPELO TOWER* 118.775 (CTAF) 0 254.275	GND CON 121.825 254.275
------------------------	---------------------------------------	--	-----------------------------------



CATEGORY	COPTER	FAF to MAP 2.5 NM												
H-023	720-1 373 (400-1)	<table border="1"> <tr> <td>Knots</td> <td>45</td> <td>60</td> <td>75</td> <td>90</td> <td>105</td> </tr> <tr> <td>Min:Sec</td> <td>3:20</td> <td>2:30</td> <td>2:00</td> <td>1:40</td> <td>1:26</td> </tr> </table>	Knots	45	60	75	90	105	Min:Sec	3:20	2:30	2:00	1:40	1:26
Knots	45	60	75	90	105									
Min:Sec	3:20	2:30	2:00	1:40	1:26									

SC-4, 13 JUN 2024 to 11 JUL 2024

SC-4, 13 JUN 2024 to 11 JUL 2024