

| | | |
|----------------------|------------------------|---|
| LOM TU 420 | APP CRS 001° | Rwy Idg 7150 TDZE 347 Apt Elev 347 |
|----------------------|------------------------|---|

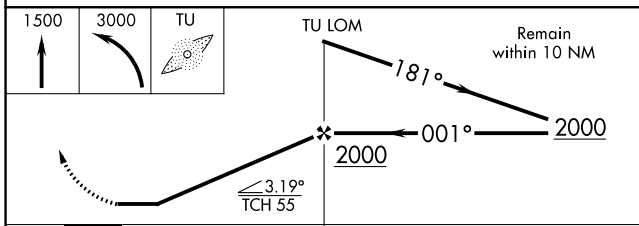
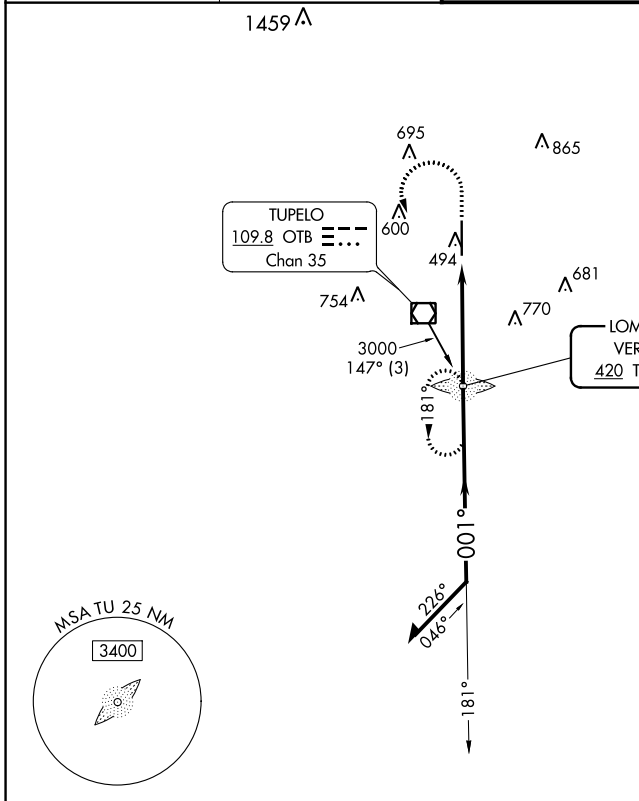
NDB RWY 36

TUPELO RGNL (TUP)

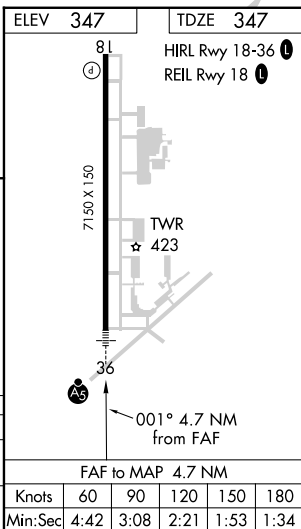
When local altimeter setting not received, use Columbus AFB altimeter setting and increase all MDA 120 feet, increase S-36 Cats C and D visibility 3/8 SM and Circling Cats C and D 1/2 SM. For inop ALS, increase S-36 Cat A and B visibility to 1 SM and Cat C and D to 1 3/8 SM. For inop ALS when using Columbus AFB altimeter setting, increase S-36 Cat A and B visibility to 1 SM and Cat C and D to 1 3/4 SM.

MALSRL
AS
MISSED APPROACH:
Climb to 1500 then
climbing left turn to 3000
direct TU LOM and hold.

| | | | |
|------------------------|---------------------------------------|---|-----------------------------------|
| ASOS 133.525 | MEMPHIS CENTER 128.5 279.55 | TUPELO TOWER ★ 118.775 (CTAF) 254.275 | GND CON 121.825 254.275 |
|------------------------|---------------------------------------|---|-----------------------------------|



| | | | | |
|----------|-----------------------|---|---------------------------|----------------------------|
| CATEGORY | A | B | C | D |
| S-36 | 840-3/4 493 (500-3/4) | | 840-1 493 (500-1) | |
| CIRCLING | 840-1 493 (500-1) | | 900-1 1/2 553 (600-1 1/2) | 1140-2 1/2 793 (800-2 1/2) |



SC-4, 13 JUN 2024 to 11 JUL 2024

SC-4, 13 JUN 2024 to 11 JUL 2024