

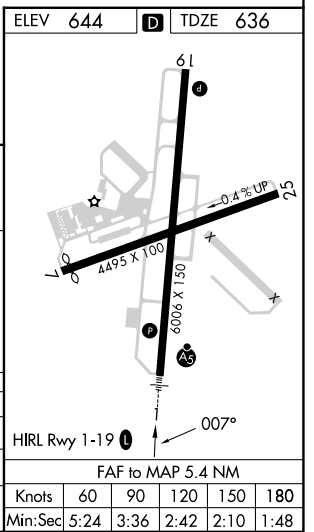
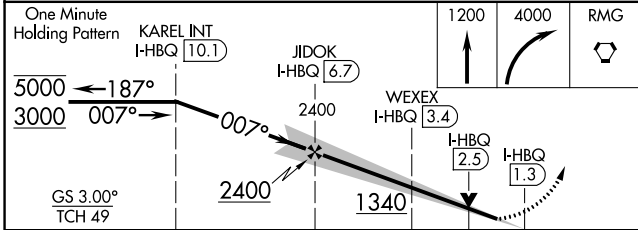
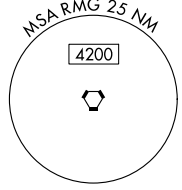
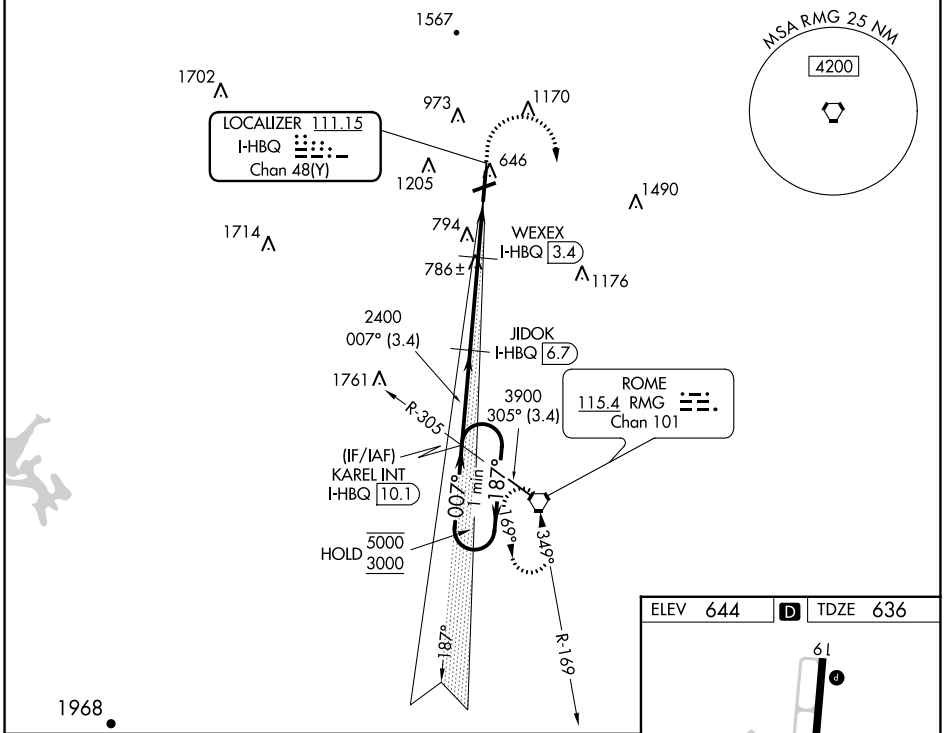
LOC/DME I-HBQ <b>111.15</b> Chan <b>48(Y)</b>	APP CRS <b>007°</b>	Rwy Idg <b>6006</b> TDZE <b>636</b> Apt Elev <b>644</b>
---	------------------------	--

# ILS or LOC RWY 1

RICHARD B RUSSELL RGNL - J H TOWERS FLD (RMG)

DME required for LOC only.	MALSR 	MISSED APPROACH: Climb to 1200 then climbing right turn to 4000 direct RMG VORTAC and hold, continue climb-in-hold to 4000.
<b>⚠</b> Rwy 1 helicopter visibility reduction below 3/4 SM NA. Circling NA west of Rwy 1-19 at night. Circling NA northwest of Rwy 7 and 19. For inop ALS, increase S-ILS 1 all Cats visibility to 7/8 SM and increase S-LOC 1 Cats A/B visibility to 1 SM and increase Cats C/D visibility to 1 1/8 SM.		

ASOS <b>119.925</b>	ATLANTA CENTER <b>124.5 270.325</b>	GCO <b>121.725</b>	UNICOM <b>122.725 (CTAF) 0</b>
------------------------	--	-----------------------	-----------------------------------



CATEGORY	A	B	C	D
S-ILS 1		941-3/4	305 (300-3/4)	
S-LOC 1		1040-3/4	404 (400-3/4)	
<b>C</b> CIRCLING	1140-1 496 (500-1)	1200-1 556 (600-1)	1480-2 1/2 836 (900-2 1/2)	1840-3 1196 (1200-3)

# ILS or LOC RWY 1

SE-4, 13 JUN 2024 to 11 JUL 2024

SE-4, 13 JUN 2024 to 11 JUL 2024