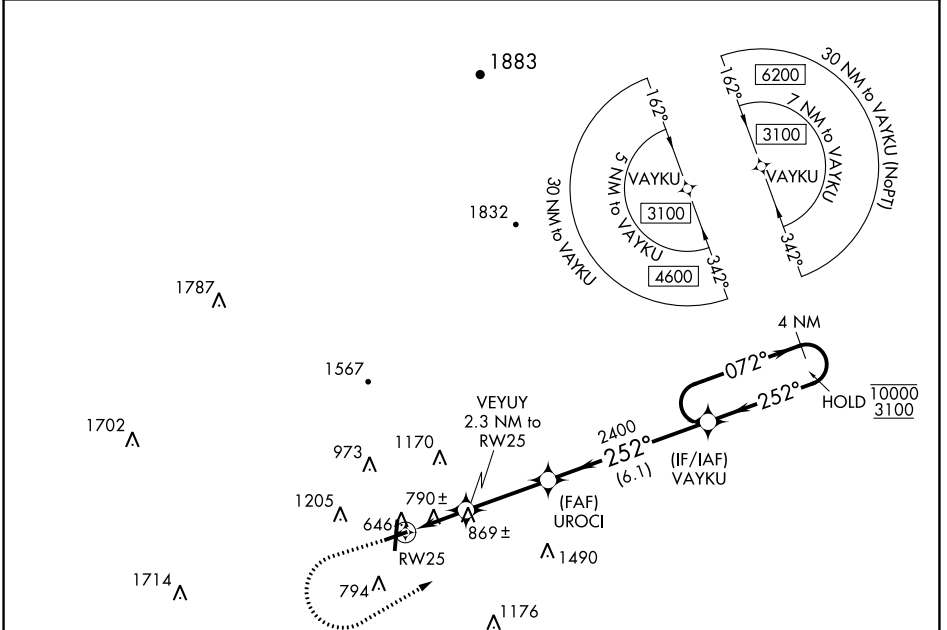


WAAS CH <b>56542</b> <b>W25A</b>	APP CRS <b>252°</b>	Rwy Idg TDZE Apt Elev	<b>4495</b> <b>638</b> <b>644</b>
--	------------------------	-----------------------------	---

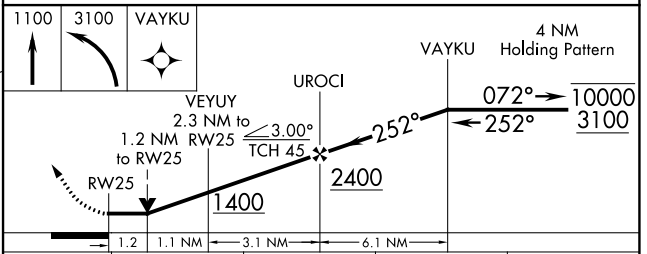
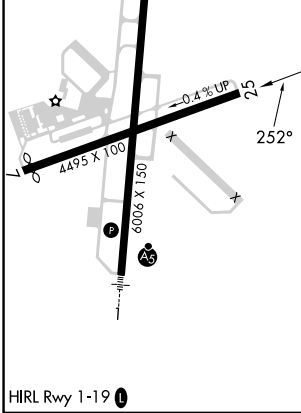
# RNAV (GPS) RWY 25

RICHARD B RUSSELL RGNL - J H TOWERS FLD (RMG)

RNP APCH - GPS.		MISSED APPROACH: Climb to 1100 then climbing left turn to 3100 direct VAYKU and hold.	
<p><b>▽</b> Rwy 25 helicopter visibility reduction below 3/4 SM NA. <b>▲</b> Straight-in minimums NA at night. Circling NA northwest of Rwy 7 and 19.</p>			
ASOS <b>119.925</b>	ATLANTA CENTER <b>124.5 270.325</b>	GCO <b>121.725</b>	UNICOM <b>122.725 (CTAF)</b>



ELEV <b>644</b>	<b>D</b>	TDZE <b>638</b>
-----------------	----------	-----------------



CATEGORY	A	B	C	D
LP MDA	1040-1	402 (400-1)	1040-1½	402 (400-1½)
LNAV MDA	1120-1	482 (500-1)	1120-1¾	482 (500-1¾)
<b>C</b> CIRCLING	1140-1 496 (500-1)	1200-1 556 (600-1)	1480-2½ 836 (900-2½)	1840-3 1196 (1200-3)

# RNAV (GPS) RWY 25

SE-4, 13 JUN 2024 to 11 JUL 2024

SE-4, 13 JUN 2024 to 11 JUL 2024