

LOC I-UIN <b>110.1</b>	APP CRS <b>218°</b>	Rwy Idg TDZE Apt Elev	<b>7098</b> <b>747</b> <b>769</b>
---------------------------	------------------------	-----------------------------	---

# LOC BC RWY 22

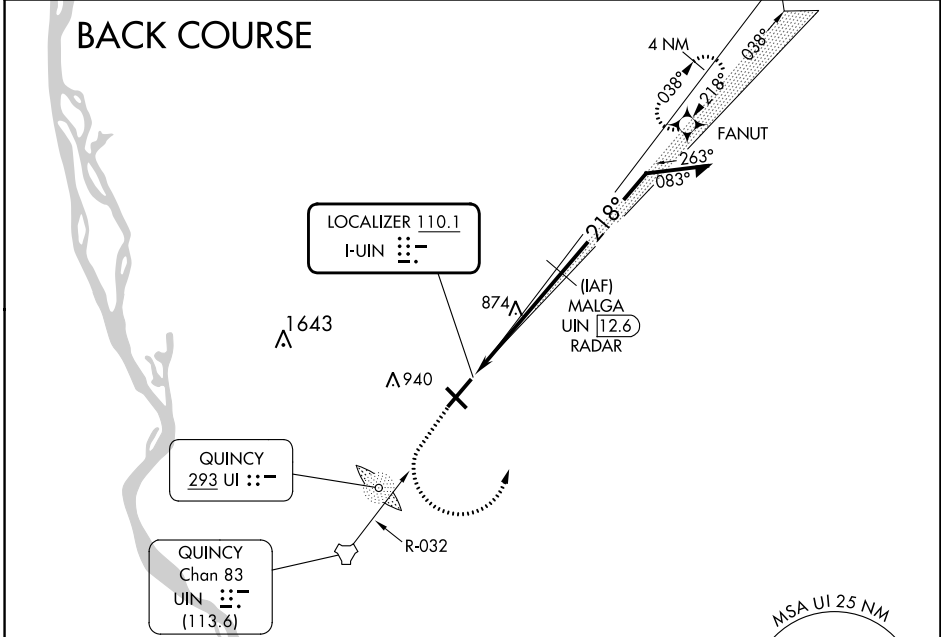
QUINCY RGNL-BALDWIN FLD (UIN)

RNP APCH - GPS  
RADAR required for procedure entry at MALGA.

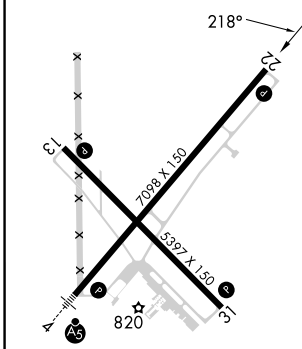
Simultaneous reception of I-UIN and UIN DME required.

MISSED APPROACH: Climb to 1200 then climbing left turn to 2400 direct FANUT and hold.

ASOS <b>121.425</b>	KANSAS CITY CENTER <b>126.225 317.775</b>	UNICOM <b>123.0 (CTAF)</b>
------------------------	--	-------------------------------



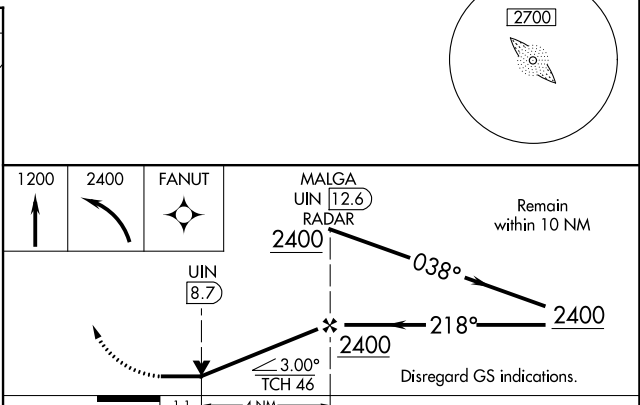
ELEV 769	<b>D</b>	TDZE 747
----------	----------	----------



HIRL Rwy 4-22 **L**  
MIRL Rwy 13-31 **L**  
REIL Rwy 22 **L**

FAF to MAP 5.1 NM

Knots	60	90	120	150	180
Min:Sec	5:06	3:24	2:33	2:02	1:42



CATEGORY	A	B	C	D
S-22	1140-1	393 (400-1)	1140-1½	393 (400-1½)
<b>CIRCLING</b>	1180-1 411 (500-1)	1220-1 451 (500-1)	1240-1½ 471 (500-1½)	1320-2 551 (600-2)

EC-3, 13 JUN 2024 to 11 JUL 2024

EC-3, 13 JUN 2024 to 11 JUL 2024