

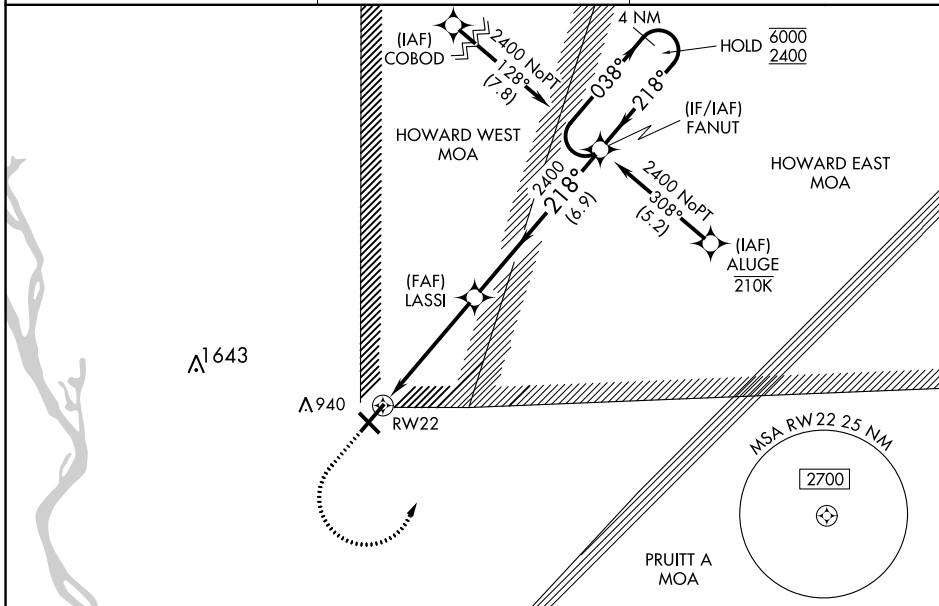
WAAS CH <b>45705</b> <b>W22A</b>	APP CRS <b>218°</b>	Rwy Idg TDZE Apt Elev	<b>7098</b> <b>747</b> <b>769</b>
--	------------------------	-----------------------------	---

# RNAV (GPS) RWY 22

QUINCY RGNL-BALDWIN FLD (UIN)

RNP APCH - GPS.		MISSED APPROACH: Climb to 1200 then climbing left turn to 2400 direct FANUT and hold.
<p>For uncompensated Baro-VNAV systems, LNAV/VNAV NA below -21°C or above 54°C.</p>		

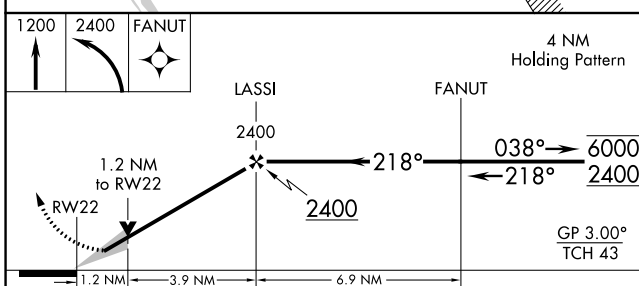
ASOS <b>121.425</b>	KANSAS CITY CENTER <b>126.225 317.775</b>	UNICOM <b>123.0 (CTAF) 0</b>
------------------------	--	---------------------------------



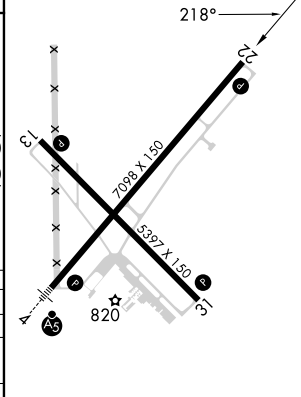
EC-3, 13 JUN 2024 to 11 JUL 2024

EC-3, 13 JUN 2024 to 11 JUL 2024

ELEV 769	<b>D</b>	TDZE 747
----------	----------	----------



CATEGORY	A	B	C	D
LPV DA		997-3/4	250 (300-3/4)	
LNAV/VNAV DA		1050-7/8	303 (300-7/8)	
LNAV MDA	1180-1	433 (500-1)	1180-1 1/4	433 (500-1 1/4)
<b>C</b> CIRCLING	1180-1 411 (500-1)	1220-1 451 (500-1)	1240-1 1/2 471 (500-1 1/2)	1320-2 551 (600-2)



- HIRL Rwy 4-22 0
- MIRL Rwy 13-31 0
- REIL Rwy 22 0